



Pricelist Heating and cooling systems – 2015

Pricelist, Listino prezzi, Preisliste, Prislita, Lista de precios, Liste de prix, Hinnasto, Cennik, Prislite, Ceník, Lista de preços



Alfa Laval pricelist for heating and cooling systems 2015

Content

Page

Heating systems

Smart heating systems

Small

Alfa Laval Micro STC	1
Alfa Laval Micro STC2	2
Mini City Indirect	3
Mini/Mini ECO	4
Mini XL	5
Mini Plus	6

Medium

Midi Compact with IQHeat	7
--------------------------	---

Large

Alfa Laval Maxi	8
-----------------	---

Standard heating systems

Small

Alfa Laval Micro RTC	9
Alfa Laval Micro DPC	10

Medium

Midi Wall	11
Midi Compact	12

Simple heating systems

Small

Alfa Laval Micro HTC	14
Mini City Indirect HTC	15

Tap water systems

Smart tap water systems

High energy efficient

Alfa Laval AquaStar	16
Alfa Laval AquaMicro	17
AquaEfficiency AlfaNova®	18
AquaEfficiency Copper Brazed	20
AquaEfficiency Gasketed	22
AlfaPilot	24

Anti-legionella

AquaProtect	25
-------------	----

Standard tap water systems

Alfa Laval AquaFirst 27

Simple tap water systems

AquaCompact 29

Storage Tanks

Secondary storage tanks

AquaTank Stainless steel 10 bar 30

AquaTank Stainless steel 10 bar with heating coil 31

AquaTank Enamel 7 bar M1/M0 32

Primary storage tanks

Primary Tank 5 bar 34

Pool heaters

Aquapool Titanium 35

Aquapool Stainless Steel 36

Pressurisation sets

Pressosmart MP 195 37

Pressosmart MP 4 38

Pressosmart MP 5 39

Pressosmart MP 7 41

Closed expansion vessels 43

Open expansion vessels 44

Magnetic filter

KAB 45

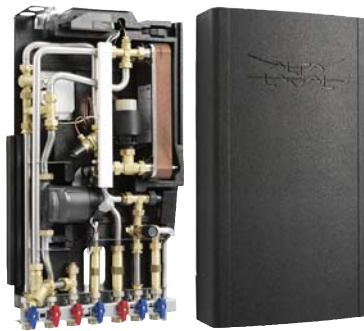
Spare parts

Spare parts 46

Dear customer,

This price list is valid from 01.01.2015; all previous price lists will lose their validity at this date. The prices shown in this list are our gross prices, based on Term of delivery according to Incoterm 2010, including export packing and loading at production unit (FCA Production site), excluding VAT and export/import duties. "The General Conditions of the selling Alfa Laval Group company apply to all purchases of products contained in this pricelist. These conditions apply whether or not a copy is attached to the order confirmation or whether a reference is made in the order confirmation. A copy of these General Conditions can be obtained from the selling Alfa Laval Group company". Prices are subject to change without notice. While every precaution has been taken, Alfa Laval assumes no responsibility for errors or omission, or for damage resulting from the information contained herein.

Heating systems



Alfa Laval Micro STC

Micro is a range of substations for **apartments or one-family houses**. This product can be used in district heating networks or local heating networks for **direct connection**.

Application	Tap water supply	Space heating supply		Solution
		Radiators	Floor heating	
1 apartment or 1 family house	yes	yes	yes	smart

Key benefits

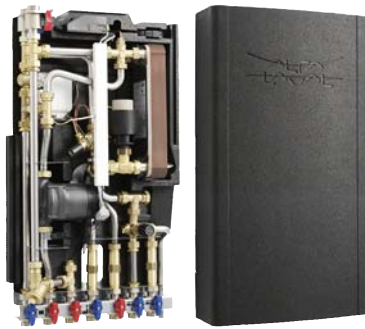
- + The Alfa Laval “Plug & play solution”: easy to install, easy to maintain
- + Best performance of tap water - Unique tap water control
- + Reduces the use of energy - Integrated insulation
- + Reduces the use of energy - Supports individual measuring of flow and energy
- + Prepared for multi heat source - Lowest possible return temperature

Operating limits	Design temperature	Design pressure
Primary heating	100°C	10 bar
Secondary heating	100°C	10 bar
Domestic hot water (DHW)	100°C	10 bar

Model	Control equipment	Connections (flow meters)	W (mm)	D (mm)	H (mm)	Weight (kg)	Article no.	Price	Recommended First fix jig
Micro STC-GE-737-FS-9-2.5-0.63-DP-3x110-C-I	Honeywell	3 x 110 x 3/4"	430	160	780	25	738885	2570	AM1117
Micro STC-GE-737-FS-9-2.5-0.63-3x110-C-I	Honeywell	3 x 110 x 3/4"	430	160	780	25	738886	2450	AM1117
Micro STC-GE-737-O-9-2.5-0.63-DP-3x110-C-I	Honeywell	3 x 110 x 3/4"	430	160	780	25	738887	2510	AM1117
Micro STC-GE-737-O-9-2.5-0.63-3x110-C-I	Honeywell	3 x 110 x 3/4"	430	160	780	25	738888	2450	AM1117
Micro STC-GE-737-O-9-2.5-0.63-1x110-C-I	Honeywell	3 x 110 x 3/4"	430	160	780	25	738908	2391	AM1116

Options for Alfa Laval Micro STC	Article no.	Price
First fix jig including 6 Shut-off valves	AM1116	137
First fix jig including 7 Shut-off valves	AM1117	150

More information of this product on Alfa Laval Anytime, our eBusiness for channel partners:
<https://ebusiness.alfalaval.com/alweb/view/category/0A188C41-B204-1B42-4529-A32300C3F89C#Tabd>


Alfa Laval Micro STC2

Micro is a range of substations for **apartments or one-family houses**. This product can be used in district heating networks or local heating networks for **direct connection**.

Application	Tap water supply	Space heating supply		Solution
		Radiators	Floor heating	
1 apartment or 1 family house	yes	yes	yes	smart

Key benefits

- + The Alfa Laval “Plug & play solution”: easy to install, easy to maintain
- + Best performance of tap water - Unique tap water control
- + Reduces the use of energy - Integrated insulation
- + Reduces the use of energy - Supports individual measuring of flow and energy
- + Prepared for multi heat source - Lowest possible return temperature

Operating limits	Design temperature	Design pressure
Primary heating	100°C	10 bar
Secondary heating	100°C	10 bar
Domestic hot water (DHW)	100°C	10 bar

Model	Control equipment	Connections (flow meters)	W (mm)	D (mm)	H (mm)	Weight (kg)	Article no.	Price	Recommended First fix jig
Micro STC2-GE-737-O-9-2.5-0.63-DP-3x110-C-I	Honeywell	3 x 110 x 3/4"	430	160	780	26	738889	2690	AM1117
Micro STC2-GE-737-O-2.5-0.63-1x110-C-I	Honeywell	1 x 110 x 3/4"	430	160	780	26	738890	2570	AM1116

Options for Alfa Laval Micro STC2	Article no.	Price
First fix jig including 6 Shut-off valves	AM1116	137
First fix jig including 7 Shut-off valves	AM1117	150

More information of this product on Alfa Laval Anytime, our eBusiness for channel partners:
<https://ebusiness.alfalaval.com/alweb/view/category/A8C5D4DE-AD0C-8430-B854-A32300C443F7#>



Mini City Indirect

Mini City Indirect is a range of substations for **apartments or one-family houses**. This product can be used in primary heating networks or local heating networks for **indirect connection** (2 heat exchangers between heating source and heating supply).

Application	Tap water supply	Space heating supply		Solution
		Radiators	Floor heating	
1 apartment or 1 family house	yes	yes	yes	smart

Key benefits

- + The Alfa Laval “Plug & play solution”: easy to install, easy to maintain
- + Best performance of tap water - Unique tap water control
- + Space saving design - Small size and low weight
- + Reduces the use of energy - Connection for individual measuring of use of energy
- + Prepared for multi heat source - Lowest possible return temperature

Operating limits	Design temperature	Design pressure
District heating	120°C	16 bar
Secondary heating	100°C	10 bar
Domestic hot water (DHW)	100°C	10 bar

Model	Control equipment	Connections (energy meter)	W (mm)	D (mm)	H (mm)	Weight (kg)	Article no.	Price
Mini City-I-GE-737-O-9-MIX-2,5-0,4-130-S-C	Honeywell	130 x 1"	422	330	700	26	738292	2939
Mini City-I-GE-737-O-9-2,5-0,4-130-S-C	Honeywell	130 x 1"	422	330	700	26	738293	2804
Mini City-I-GE-737-10-2,5-1,0-130-S-C-UK	Honeywell	130 x 1"	422	330	700	26	738294	2846
Mini City-I-GE-737-FS-10-2,5-1,0-130-S-C-UK	Honeywell	130 x 1"	422	330	700	26	738295	3066

Options for Mini City Indirect	Article no.	Price
Adapter energy meter 3/4"-1"	732545	30
Underfloor heating thermostat indirect	AM1069	172

More information of this product on Alfa Laval Anytime, our eBusiness for channel partners:
<https://ebusiness.alfalaval.com/alweb/view/category/0C1AF389-D39F-44A4-AA24-D3F60E7C582F#>



Mini/Mini ECO

Mini/Mini ECO is a range of substations for **apartments or one-family houses**. This product can be used in district heating networks or local heating networks for **indirect connection** (2 heat exchangers between heating source and heating supply).

Application	Tap water supply	Space heating supply		Solution
		Radiators	Floor heating	
1 - 4 apartments	yes	yes	yes	smart

Key benefits

- + The Alfa Laval “Plug & play solution”: easy to install, easy to maintain
- + Best performance of tap water - Unique tap water control
- + Reduces the use of energy - Connection for individual measuring of use of energy
- + Prepared for multi heat source - Lowest possible return temperature
- + Short installation time - Easy to install with up/down connections

Operating limits	Design temperature	Design pressure
Primary heating	120°C	16 bar
Secondary heating	100°C	10 bar
Domestic hot water (DHW)	100°C	10 bar

Model	Control equipment	Connections (energy meter)	W (mm)	D (mm)	H (mm)	Weight (kg)	Article no.	Price
Mini ECO-3-GE1-H737IS-O-9-STL-2,5-0,63-C	Honeywell	130 x 1"	577	458	770	31	738347	3342
Mini ECO-3-GE1-H737IS-O-9-2,5-0,63-C	Honeywell	130 x 1"	577	458	770	31	738349	3302
Mini ECO-5-GE2-H737IS-O-TH-9-STL-2,5-0,4-C	Honeywell	130 x 1"	577	458	770	33	738355	3873
Mini ECO-5-GE2-H737IS-O-TH-9-2,5-0,4-C	Honeywell	130 x 1"	577	458	770	31	738357	3833

Options for Mini/Mini ECO	Article no.	Price
Adapter energy meter 3/4"-1"	732545	30
Underfloor heating thermostat	AM1069	172

More information of this product on Alfa Laval Anytime, our eBusiness for channel partners:

<https://ebusiness.alfalaval.com/alweb/view/category/EE155BFA-F6FB-4855-A6EA-39BE7E7EF73F#>



Mini XL

Mini XL is a range of substations for **one family houses and multi family buildings**. This product can be used in district heating networks or local heating networks for **indirect connection** (2 heat exchangers between heating source and heating supply).

Application	Tap water supply	Space heating supply		Solution
		Radiators	Floor heating	
1 - 8 apartments	yes	yes	yes	smart

Key benefits

- + The Alfa Laval “Plug & play solution”: easy to install, easy to maintain
- + Best performance of tap water - Unique tap water control
- + Reduces the use of energy - Connection for individual measuring of use of energy
- + Prepared for multi heat source - Lowest possible return temperature
- + Short installation time - Easy to install with up/down connections

Operating limits	Design temperature	Design pressure
District heating	120°C	16 bar
Secondary heating	100°C	6 bar
Domestic hot water (DHW)	100°C	10 bar

Model	Control equipment	Connections (energy meter)	W (mm)	D (mm)	H (mm)	Weight (kg)	Article no.	Price
Mini XL-6-GE2-H737IS-O-9-4,0-1,6-C	Honeywell	130 x 1"	577	458	770	33	738390	4179

Options for Mini XL							Article no.	Price
Adapter energy meter 3/4"-1"							732545	30
Underfloor heating thermostat							AM1069	172

More information of this product on Alfa Laval Anytime, our eBusiness for channel partners:
<https://ebusiness.alfalaval.com/alweb/view/category/0583D140-83EF-45FC-964B-D46112B201EA#>



Mini Plus

Mini Plus is a range of substations for **one-family houses and multi-family buildings**. This product can be used in district heating networks or local heating networks for **indirect connection** (2 heat exchangers between heating source and heating supply).

Application	Tap water supply	Space heating supply		Solution
		Radiators	Floor heating	
1 - 12 apartments	yes	yes	yes	smart

Key benefits

- + The Alfa Laval “Plug & play solution”: easy to install, easy to maintain
- + Space saving design - Small size and low weight
- + Reduces the use of energy - Connection for individual measuring of use of energy
- + Keeps the use of electricity to a minimum - Comply with the EUP-directive
- + Short installation time - Easy to install with up/down connections

Operating limits	Design temperature	Design pressure
District heating	120°C	16 bar
Secondary heating	100°C	6 bar
Domestic hot water (DHW)	100°C	10 bar

Model	Control equipment	Connections (energy meter)	W (mm)	D (mm)	H (mm)	Weight (kg)	Article no.	Price
Mini Plus-GE2-SR144-FS-1,6-1,6-DHWC-T-C	Siemens	130 x 1"	600	470	1000	41	738548	6040
Mini Plus-GE3-SR144-FS-1,6-1,6-DHWC-T-C	Siemens	130 x 1"	600	470	1000	41	738549	6660
Mini Plus-GE2-H737-2,5-1,6-DHWC-T-C	Honeywell	130 x 1"	600	470	1000	41	738560	4974
Mini Plus-GE3-H737-2,5-1,6-DHWC-T-C	Honeywell	130 x 1"	600	470	1000	41	738561	5594

More information of this product on Alfa Laval Anytime, our eBusiness for channel partners:

<https://ebusiness.alfalaval.com/alweb/view/category/37F0B4E2-E853-41A3-80B1-3FA7841F2592#>



Midi Compact with IQHeat

Midi Compact with IQHeat is the most advanced substation. It is equipped with the Alfa Laval developed software - the IQHeat controller - monitoring the lowest return temperatures. Remote communication and control take place via internet or any Building Management System. This range of substations is for multi-family buildings up to 50 apartments. This product can be used in district heating networks or local heating networks for indirect connection (2 heat exchangers between heating source and heating supply).

Application	Tap water supply	Space heating supply		Solution
		Radiators	Floor heating	
10 - 50 apartments	yes	yes	yes	smart

Key benefits

- + The Alfa Laval "Plug & play solution": easy to install, easy to maintain
- + Ensures the lowest return temperature on primary side
- + Proven energy savings up to 15%
- + Communication on distance
- + Extremely small footprint, optimized compact design and low weight with good accessibility for service and maintenance

Operating limits	Design temperature	Design pressure
District heating	120°C	16 bar
Secondary heating	100°C	6 bar
Domestic hot water (DHW)	100°C	10 bar

Model	Nominal capacity (kW)	Control equipment	Connections (energy meter)	W (mm)	D (mm)	H (mm)	Weight (kg)	Article no.	Price
80-GM1-IQHeat-1.6-1.6	80	Alfa Laval IQHeat	-	679	581	1299	113	**	9965
100-GM1-IQHeat-1.6-1.6	100	Alfa Laval IQHeat	-	697	581	1299	118	**	10309
160-GM1-IQHeat-2.5-2.5	160	Alfa Laval IQHeat	-	697	581	1299	123	**	10860
200-WS2-IQHeat-2.5-4.0	200	Alfa Laval IQHeat	-	726	581	1299	128	**	11629
80-V-GM1-IQHeat-1.6-1.6	80	Alfa Laval IQHeat	190 x 1"	764	581	1299	116	**	10433
100-V-GM1-IQHeat-1.6-1.6	100	Alfa Laval IQHeat	190 x 1"	783	581	1299	121	**	10777
160-V-GM1-IQHeat-2.5-2.5	160	Alfa Laval IQHeat	190 x 1"	783	581	1299	126	**	11328
200-V-WS2-IQHeat-2.5-4.0	200	Alfa Laval IQHeat	190 x 1"	811	581	1299	131	**	12097
80-HB-GM1-IQHeat-1.6-1.6	80	Alfa Laval IQHeat	260 x F25	1092	708	1299	121	**	12015
100-HB-GM1-IQHeat-1.6-1.6	100	Alfa Laval IQHeat	260 x F25	1092	708	1299	126	**	12359
160-HB-GM1-IQHeat-2.5-2.5	160	Alfa Laval IQHeat	260 x F25	1092	708	1299	131	**	12910
200-HB-WS2-IQHeat-2.5-4.0	200	Alfa Laval IQHeat	260 x F25	1092	708	1299	136	**	13679

Options for Midi Compact with IQHeat	Description	Article no.	Price
IQWeb 200 ***	Web-module, including local web-page	SO1022	1485
IQMeter 200 ***	M-Bus communication energy meter	SO1023	583
IQBacNet ***	BacNet communication module	SO1025	636
Pressure sensor	Pressure monitoring secondary side. Only available in combination with IQMeter 200	AM1107	437

** Midi Compact with IQHeat has to be selected in AlfaSelect / CAS. Please consult Alfa Laval

*** Maximum 2 out of the 3 communication systems can be added

More information of this product on Alfa Laval Anytime, our eBusiness for channel partners:

<https://ebusiness.alfalaval.com/alweb/view/category/CC5BDF6A-3FF1-D9FB-60D3-A31800BC9240#>

Alfa Laval Maxi

The Alfa Laval Maxi range is a very large range of heating & cooling systems with multiple possibilities in capacities and applications. Maxi range offers an **engineered** solution according to customers needs and the requirements of the building.



Applications

- Apartment blocks
- Commercial centres
- Offices
- Public buildings
- Factories etc.

Supplies

- Domestic Hot Water & space heating: 4 circuits maximum
- Space heating only
- Cooling

Nominal capacities

- 50kW - 10MW

Primary source

- District heating circuit
- District cooling circuit
- Local networks

Control equipment

- Alfa Laval IQHeat with built-in IQWeb (web solution), IQMeter (Mbus heat meter) or IQBacNet option or
- District cooling circuit
- other control equipment brands



Key benefits

- The Alfa Laval "Plug & play solution": easy to install, easy to maintain
- Top quality with unique and world-leading expertise
- Most energy efficient solution thanks to optimum heat recovery & low return temperatures
- Supervision via customer's computer, smartphone or control panel (IQWeb solution)
- "All-in-one": 1 single system for any type of heating & cooling circuit (1 to 4 different heat exchangers)

Selection

Please contact your local Alfa Laval company

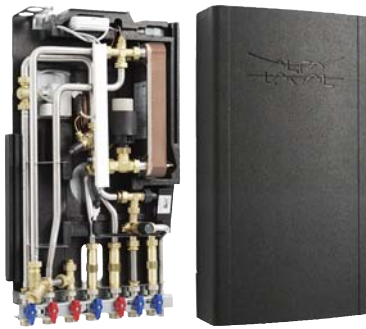


Operating limits	Design temperature	Design pressure
District heating	120°C - 150°C	16 bar - 25 bar
District cooling	50°C	16 bar
Secondary heating	100°C	10bar
Secondary cooling	0°C	10 bar
Domestic hot water (DHW)	90°C	10 bar

More information of these products on Alfa Laval Anytime, our eBusiness for channel partners:

<https://ebusiness.alfalaval.com/alweb/view/category/2BBF2572-748A-49DC-9E0E-E5A63667CAF6;jsessionid=06070E87C7370744EEE4362DB17359BE#Tabd>

<https://ebusiness.alfalaval.com/alweb/view/category/B631F8C0-6BC4-4A43-AE8C-EB44F402C4CB#Tabd>



Alfa Laval Micro RTC

Micro is a range of substations for **apartments or one-family houses**. This product can be used in district heating networks or local heating networks for **direct connection**.

Application	Tap water supply	Space heating supply		Solution
		Radiators	Floor heating	
1 apartment or 1 family house	yes	yes	no	standard

Key benefits

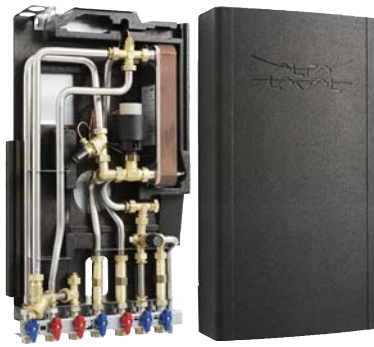
- + The Alfa Laval "Plug & play solution": easy to install, easy to maintain
- + Best performance of tap water - Unique tap water control
- + Reduces the use of energy - Integrated insulation
- + Space saving design - Small size and low weight
- + Reduces the use of energy - Supports individual measuring of flow and energy

Operating limits	Design temperature	Design pressure
Primary heating	100°C	10 bar
Secondary heating	100°C	10 bar
Domestic hot water (DHW)	100°C	10 bar

Model	Control equipment	Connections (flow meters)	W (mm)	D (mm)	H (mm)	Weight (kg)	Article no.	Price	Recommended First fix jig
Micro RTC-721-FS-9-2.5-0.63-DP-3x110-C-I	Honeywell	3 x 110 x 3/4"	430	160	780	23	738883	1972	AM1117
Micro RTC-721-9-2.5-0.63-DP-3x110-C-I	Honeywell	3 x 110 x 3/4"	430	160	780	23	738884	1913	AM1117
Micro RTC-721-2.5-0.63-DP-1x110-C-I	Honeywell	1 x 110 x 3/4"	430	160	780	23	738906	1853	AM1116

Options for Alfa Laval Micro RTC	Article no.	Price
First fix jig including 6 Shut-off valves	AM1116	137
First fix jig including 7 Shut-off valves	AM1117	150

More information of this product on Alfa Laval Anytime, our eBusiness for channel partners:
<https://ebusiness.alfalaval.com/alweb/view/category/16C496A1-C8FD-9D82-783C-A32300C3B113#>



Alfa Laval Micro DPC

Micro is a range of substations for **apartments or one-family houses**. This product can be used in district heating networks or local heating networks for **direct connection**.

Application	Tap water supply	Space heating supply		Solution
		Radiators	Floor heating	
1 apartment or 1 family house	yes	yes	no	standard

Key benefits

- + The Alfa Laval "Plug & play solution": easy to install, easy to maintain
- + Best performance of tap water - Unique tap water control
- + Reduces the use of energy - Integrated insulation
- + Space saving design - Small size and low weight
- + Reduces the use of energy - Supports individual measuring of flow and energy

Operating limits	Design temperature	Design pressure
Primary heating	100°C	10 bar
Secondary heating	100°C	10 bar
Domestic hot water (DHW)	100°C	10 bar

Model	Control equipment	Connections (flow meters)	W (mm)	D (mm)	H (mm)	Weight (kg)	Article no.	Price	Recommended First fix jig
Micro DPC-9-2.5-DP-3x110-C-I	-	3 x 110 x 3/4"	430	160	780	23	738881	1554	AM1117
Micro DPC-2.5-DP-1x110-C-I	-	1 x 110 x 3/4"	430	160	780	23	738882	1494	AM1116

Options for Alfa Laval Micro DPC	Article no.	Price
First fix jig including 6 Shut-off valves	AM1116	137
First fix jig including 7 Shut-off valves	AM1117	150

More information of this product on Alfa Laval Anytime, our eBusiness for channel partners:

<https://ebusiness.alfalaval.com/alweb/view/category/1E1FC6FA-B66C-7A6D-36EE-A32300C2B569#>



Midi Wall

Midi Wall is a range of substations for multi-family buildings up to 30 apartments. This product can be used in district heating networks or local heating networks for indirect connection (2 heat exchangers between heating source and heating supply).

Application	Tap water supply	Space heating supply		Solution
		Radiators	Floor heating	
10 - 30 apartments	yes	yes	yes	standard

Key benefits

- + The Alfa Laval “Plug & play solution”: easy to install, easy to maintain
- + Space saving design - Small size and low weight
- + Best control performance for long term use due to 2-stroke HE AND low return corresponding to 2-step technology
- + Best performance for long term use - Stainless steel piping
- + Reduces the use of energy - Supports individual measuring of flow and energy

Operating limits	Design temperature	Design pressure
District heating	120°C	16 bar
Secondary heating	90°C	10 bar
Domestic hot water (DHW)	90°C	10 bar

Model	Nominal capacity (kW)	Control equipment	Connections (energy meter)	W (mm)	D (mm)	H (mm)	Weight (kg)	Article no.	Price
Midi Wall-70-H-GM1-TA-1.6-1.6	70	Schneider valves	190 x 1"	730	510	1115	62	738864	4586
Midi Wall-100-H-GM1-TA-1.6-1.6	100	Schneider valves	190 x 1"	730	510	1115	64	738865	4985
Midi Wall-135-H-GM1-TA-1.6-2.5	135	Schneider valves	190 x 1"	730	510	1115	66	738866	5557
Midi Wall-70-H-GM1-SR-1.6-1.6	70	Siemens valves	190 x 1"	730	510	1115	61	738867	4287
Midi Wall-100-H-GM1-SR-1.6-1.6	100	Siemens valves	190 x 1"	730	510	1115	63	738868	4686
Midi Wall-135-H-GM1-SR-1.6-2.5	135	Siemens valves	190 x 1"	730	510	1115	65	738869	5258
Midi Wall-70-H-GM1-TA2222-1.6-1.6	70	Schneider TA2222	190 x 1"	730	510	1115	68	738870	6580
Midi Wall-100-H-GM1-TA2222-1.6-1.6	100	Schneider TA2222	190 x 1"	730	510	1115	70	738871	6979
Midi Wall-135-H-GM1-TA2222-1.6-2.5	135	Schneider TA2222	190 x 1"	730	510	1115	72	738872	7551
Midi Wall-70-H-GM1-SR144-1.6-1.6	70	Siemens SR144	190 x 1"	730	510	1115	65	738873	5684
Midi Wall-100-H-GM1-SR144-1.6-1.6	100	Siemens SR144	190 x 1"	730	510	1115	67	738874	6082
Midi Wall-135-H-GM1-SR144-1.6-2.5	135	Siemens SR144	190 x 1"	730	510	1115	69	738875	6654

Options for Midi Wall	Article no.	Price
3-point flanged meter section 260 x F25	738662	1238
GENI module Magna 25-100 SP-1104 204	SP1104	212
Floor support	FR1183	200
Adjustable valve DHWC	VAB1013	133
Floor heating thermostat	AM1069	168

More information of this product on Alfa Laval Anytime, our eBusiness for channel partners:
<https://ebusiness.alfalaval.com/alweb/view/category/C7E9D8A7-1DCE-0F4B-4360-A30000D40967#>

Midi Compact

Midi Compact is a range of substations for multi-family buildings up to 50 apartments. This product can be used in district heating networks or local heating networks for indirect connection (2 heat exchangers between heating source and heating supply).



Application	Tap water supply	Space heating supply		Solution
		Radiators	Floor heating	
10 - 50 apartments	yes	yes	yes	standard

Key benefits

- + The Alfa Laval "Plug & play solution": easy to install, easy to maintain
- + Optimized price/performance, Alfa Laval world class technology heat exchangers, optimized parameters settings on the control loops and 2-step for lowest return temperature and best control performance
- + Extremely small footprint, optimized compact design and low weight with good accessibility for service and maintenance

Operating limits	Design temperature	Design pressure
District heating	120°C	16 bar
Secondary heating	100°C	10 bar
Domestic hot water (DHW)	100°C	10 bar

Model	Nominal capacity (kW)	Control equipment	Connections (energy meter)	W (mm)	D (mm)	H (mm)	Weight (kg)	Article no.	Price
80-GM1-SR144-1.6-1.6	80	Siemens SR144	-	679	581	1299	112	738683	6184
100-GM1-SR144-1.6-1.6	100	Siemens SR144	-	697	581	1299	117	738684	6527
160-GM1-SR144-2.5-2.5	160	Siemens SR144	-	697	581	1299	122	738685	7078
200-WS3-SR144-2.5-4.0	200	Siemens SR144	-	726	581	1299	127	738686	7848
80-V-GM1-SR144-1.6-1.6	80	Siemens SR144	190 x 1"	764	581	1299	115	738687	6652
100-V-GM1-SR144-1.6-1.6	100	Siemens SR144	190 x 1"	783	581	1299	120	738688	6995
160-V-GM1-SR144-2.5-2.5	160	Siemens SR144	190 x 1"	783	581	1299	125	738689	7546
200-V-WS3-SR144-2.5-4.0	200	Siemens SR144	190 x 1"	811	581	1299	130	738690	8316
80-HB-GM1-SR144-1.6-1.6	80	Siemens SR144	260 x F25	1092	708	1299	120	738691	8264
100-HB-GM1-SR144-1.6-1.6	100	Siemens SR144	260 x F25	1092	708	1299	125	738692	8607
160-HB-GM1-SR144-2.5-2.5	160	Siemens SR144	260 x F25	1092	708	1299	130	738693	9158
200-HB-WS3-SR144-2.5-4.0	200	Siemens SR144	260 x F25	1092	708	1299	135	738694	9928
80-GM1-SR-1.6-1.6	80	Siemens valves	-	679	581	1299	106	738695	4728
100-GM1-SR-1.6-1.6	100	Siemens valves	-	697	581	1299	111	738696	5071
160-GM1-SR-2.5-2.5	160	Siemens valves	-	697	581	1299	116	738697	5622
200-WS2-SR-2.5-4.0	200	Siemens valves	-	726	581	1299	121	738698	6392
80-V-GM1-SR-1.6-1.6	80	Siemens valves	190 x 1"	764	581	1299	109	738699	5196
100-V-GM1-SR-1.6-1.6	100	Siemens valves	190 x 1"	783	581	1299	114	738700	5539
160-V-GM1-SR-2.5-2.5	160	Siemens valves	190 x 1"	783	581	1299	119	738701	6090
200-V-WS2-SR-2.5-4.0	200	Siemens valves	190 x 1"	811	581	1299	124	738702	6860
80-GM1-TA2222-1.6-1.6	80	Schneider TA2222	-	679	581	1299	112	738707	6968
100-GM1-TA2222-1.6-1.6	100	Schneider TA2222	-	697	581	1299	117	738708	7311
160-GM1-TA2222-2.5-2.5	160	Schneider TA2222	-	697	581	1299	122	738709	7862
200-WS3-TA2222-2.5-4.0	200	Schneider TA2222	-	726	581	1299	127	738710	8632
80-V-GM1-TA2222-1.6-1.6	80	Schneider TA2222	190 x 1"	764	581	1299	115	738711	7436
100-V-GM1-TA2222-1.6-1.6	100	Schneider TA2222	190 x 1"	783	581	1299	120	738712	7779
160-V-GM1-TA2222-2.5-2.5	160	Schneider TA2222	190 x 1"	783	581	1299	125	738713	8330
200-V-WS3-TA2222-2.5-4.0	200	Schneider TA2222	190 x 1"	811	581	1299	130	738714	9100
80-HB-GM1-TA2222-1.6-1.6	80	Schneider TA2222	260 x F25	1092	708	1299	120	738715	9048
100-HB-GM1-TA2222-1.6-1.6	100	Schneider TA2222	260 x F25	1092	708	1299	125	738716	9391
160-HB-GM1-TA2222-2.5-2.5	160	Schneider TA2222	260 x F25	1092	708	1299	130	738717	9942
200-HB-WS3-TA2222-2.5-4.0	200	Schneider TA2222	260 x F25	1092	708	1299	135	738718	10712

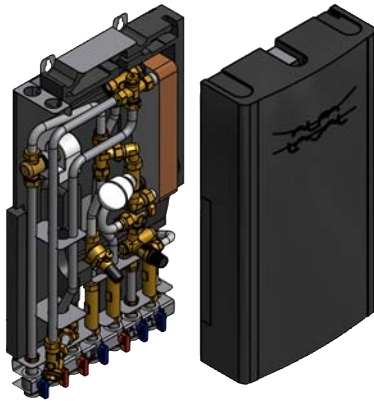
80-GM1-TA-1.6-1.6	80	Schneider valves	-	679	581	1299	106	738719	4784
100-GM1-TA-1.6-1.6	100	Schneider valves	-	697	581	1299	111	738720	5127
160-GM1-TA-2.5-2.5	160	Schneider valves	-	697	581	1299	116	738721	5678
200-WS2-TA-2.5-4.0	200	Schneider valves	-	726	581	1299	121	738722	6448
80-V-GM1-TA-1.6-1.6	80	Schneider valves	190 x 1"	764	581	1299	109	738723	5252
100-V-GM1-TA-1.6-1.6	100	Schneider valves	190 x 1"	783	581	1299	114	738724	5595
160-V-GM1-TA-2.5-2.5	160	Schneider valves	190 x 1"	783	581	1299	119	738725	6146
200-V-WS2-TA-2.5-4.0	200	Schneider valves	190 x 1"	811	581	1299	124	738726	6916

Options for Midi Compact	Description	Article no.	Price
4-points secondary meter		MA1031	690
3-points secondary meter		MA1032	636
Big plate for control equipment		AM1106	89
GENI Module Magna		SP1104	212
IF Module Wilo		SP1075	209

More information of this product on Alfa Laval Anytime, our eBusiness for channel partners:
<https://ebusiness.alfalaval.com/alweb/view/category/B686FFD2-2233-477B-9CF3-97D07B3CFDB7#>

Alfa Laval Micro HTC

Micro is a range of substations for **apartments or one-family houses**. This product can be used in district heating networks or local heating networks for **direct connection**.



Application	Tap water supply	Space heating supply		Solution
		Radiators	Floor heating	
1 apartment or 1 family house	yes	yes	no	simple

Key benefits

- + The Alfa Laval "Plug & play solution": easy to install, easy to maintain
- + Reduces the use of energy - Integrated insulation
- + Best performance for long term use - Stainless steel piping
- + Space saving design - Small size and low weight
- + Reduces the use of energy - Supports individual measuring of flow and energy

Operating limits	Design temperature	Design pressure
Primary heating	100°C	10 bar
Secondary heating	100°C	10 bar
Domestic hot water (DHW)	100°C	10 bar

Model	Control equipment	Connections (flow meters)	W (mm)	D (mm)	H (mm)	Weight (kg)	Article no.	Price	Recommended First fix jig
Micro HTC-9-2.5-0.63-DP-3x110-C-I	Honeywell	3 x 110 x 3/4"	430	160	780	19	738891	1494	AM1117

Options for Alfa Laval Micro HTC	Article no.	Price
First fix jig including 7 Shut-off valves	AM1117	150

More information of this product on Alfa Laval Anytime, our eBusiness for channel partners:
<https://ebusiness.alfalaval.com/alweb/view/category/0F74B57F-31DC-3FE5-5A15-A32300C34E9A#>



Mini City Indirect HTC

Mini City Indirect HTC is a range of substations for **apartments or one-family houses**. This product can be used in district heating networks or local heating networks for **indirect connection** (2 heat exchangers between heating source and heating supply).

Application	Tap water supply	Space heating supply		Solution
		Radiators	Floor heating	
1 apartment or 1 family house	yes	yes	yes	simple

Key benefits

- + The Alfa Laval "Plug & play solution": easy to install, easy to maintain
- + Reduces the use of energy - Insulated pipes and heat exchanger
- + Best performance for long term use - Stainless steel piping
- + Space saving design - Small size and low weight
- + Reduces the use of energy - Connection for individual measuring of use of energy

Operating limits	Design temperature	Design pressure
Primary heating	100°C	10 bar
Secondary heating	100°C	10 bar
Domestic hot water (DHW)	100°C	10 bar

Model	Control equipment	Connections (energy meter)	W (mm)	D (mm)	H (mm)	Weight (kg)	Article no.	Price
Mini City-I-HTC-9-2.5-2.5-DP-130-S	Honeywell	130 x 1"	422	330	728	15	738753	2199
Mini City-I-HTC-9-2.5-2.5-DP-130-S-I	Honeywell	130 x 1"	422	330	728	15	738754	2446
Mini City-I-HTC-9-2.5-2.5-DP-130-S-C	Honeywell	130 x 1"	422	330	728	15	738755	2292
Mini City-I-HTC-9-2.5-2.5-DP-130-S-C-I	Honeywell	130 x 1"	422	330	728	15	738756	2539

Options for Mini City Indirect HTC	Article no.	Price
Adapter energy meter 3/4"-1"	732545	30
Underfloor heating thermostat indirect	AM-1069	172

More information of this product on Alfa Laval Anytime, our eBusiness for channel partners:

<https://ebusiness.alfalaval.com/alweb/view/category/57600A16-38AD-6113-5FD0-A158009F183C#>

Tap water systems



Alfa Laval AquaStar

AquaStar is a domestic hot water unit for **apartments or one-family houses**. This product can be used in district heating networks, secondary networks or local heating networks.

Application	Tap water supply	Space heating supply		Solution
		Radiators	Floor heating	
1 apartment or 1 family house	yes	no	no	smart

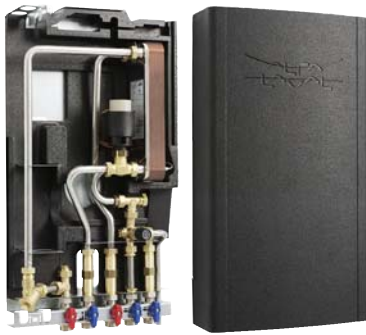
Key benefits

- + The Alfa Laval “Plug & play solution”: easy to install, easy to maintain
- + Complete installation package - Tap water
- + Best performance of tap water - Unique tap water control
- + Reduces the use of energy - insulation
- + Space saving design - Small size and low weight
- + Prepared for multi heat source - Lowest possible return temperature

Operating limits	Design temperature	Design pressure
Primary heating	12°C	16 bar
Domestic hot water (DHW)	100°C	10 bar

Model	Control equipment	Connections (flow meters)	W (mm)	D (mm)	H (mm)	Weight (kg)	Article no.	Price
AquaStar 1-2.5-1 (27 plate version)	-	-	185	115	335	4	738879	657
AquaStar 2-2.5-1 (35 plate version)	-	-	185	115	335	4	738915	717

More information of this product on Alfa Laval Anytime, our eBusiness for channel partners:
<https://ebusiness.alfalaval.com/alweb/view/category/02DFD41B-B568-37E3-5FF3-A32300C0B3E7#>



Alfa Laval AquaMicro

AquaMicro AquaStar is a domestic hot water unit for **apartments or one-family houses**. This product can be used in district heating networks, secondary networks or local heating networks.

Application	Tap water supply	Space heating supply		Solution
		Radiators	Floor heating	
1 apartment or 1 family house	yes	no	no	smart

Key benefits

- + The Alfa Laval "Plug & play solution": easy to install, easy to maintain
- + Complete installation package - Tap water and space heating
- + Best performance of tap water - Unique tap water control
- + Reduces the use of energy - Integrated insulation
- + Best performance for long term use - Stainless steel piping
- + Space saving design - Small size and low weight
- + Reduces the use of energy - Supports individual measuring of flow and energy
- + Prepared for multi heat source - Lowest possible return temperature

Operating limits	Design temperature	Design pressure
Primary heating	12°C	16 bar
Domestic hot water (DHW)	100°C	10 bar

Model	Control equipment	Connections (flow meters)	W (mm)	D (mm)	H (mm)	Weight (kg)	Article no.	Price	Recommended First fix jig
AquaMicro-9-2.5-3x110-C-I	-	3 x 110 x 3/4"	430	160	780	19	738880	1264	AM1115

Options for Alfa Laval AquaMicro	Article no.	Price
First fix jig including 5Shut-off valves	AM1115	174

More information of this product on Alfa Laval Anytime, our eBusiness for channel partners:
<https://ebusiness.alfalaval.com/alweb/view/category/821F6F4F-3500-66F1-1CB6-A32300C20605#>



AquaEfficiency AlfaNova®

Easy to install “Plug & play” **Fusion bonded** heat exchanger unit complete with 3-port control valve, variable speed pump(s) and ModBus controller used in conjunction with central condensation boiler plant, designed to deliver direct (instantaneous) or Indirect (semi instantaneous) Domestic Hot Water (DHW) supply to any collective building (no storage vessel required).

Key benefits

- + 100% stainless steel heat exchanger
- + Optimum condensation if combined with condensing boiler
- + Good solution against scaling in hard water areas
- + ModBus RTU RS485 communication facility
- + Class A pump on primary **AND** secondary

Nominal capacities and flow rates are given for: primary inlet 70°C and DHW 10 /60 °C
Available pressure on primary side: ≥ 5 Kpa

Operating limits	Design temperature *	Design pressure
Primary	110°C	10 bar
Secondary	100°C	10 bar

Direct (instantaneous) version

Model	Nominal capacity (kW)	DHW flowrate (m ³ /h)	DHW available pressure (Kpa)	L x W x H (mm)	IS**		ID**	
					Article no.	Price	Article no.	Price
200	100	1,7	13	860 x 600 x 1535	EFF25230IS	5404	EFF25230ID	6516
200	150	2,6	12	860 x 600 x 1535	EFF25240IS	5565	EFF25240ID	6676
200	190	3,3	16	860 x 600 x 1535	EFF25250IS	5722	EFF25250ID	6834
400	240	4,1	6	860 x 600 x 1535	EFF47640IS	7796	EFF47640ID	8912
400	340	5,8	8	860 x 600 x 1535	EFF47650IS	8294	EFF47650ID	9410
400	390	6,7	8	860 x 600 x 1535	EFF47660IS	8708	EFF47660ID	9824
600	500	8,6	9	860 x 600 x 1535	EFF67670IS	9560	EFF67670ID	11642
800	600	10,3	10	860 x 600 x 1535	EFF87680IS	9663	EFF87680ID	11745
900	650	11,2	10	880 x 600 x 1535	EFF97690IS	10185	EFF97690ID	12267
900	690	11,9	9	860 x 600 x 1535	EFF976100IS	10069	EFF976100ID	12151

Indirect (semi-instantaneous) version

Model	Nominal capacity (kW)	DHW flowrate (m ³ /h)	DHW available pressure (Kpa)	L x W x H (mm)	SS**		DS**		DD**	
					Article no.	Price	Article no.	Price	Article no.	Price
200	100	1,7	32	860x600x1535	EFF25230SS	7035	EFF25230DS	8146	EFF25230DD	9807
200	150	2,6	30	860x600x1535	EFF25240SS	7196	EFF25240DS	8308	EFF25240DD	9968
200	190	3,3	26	860x600x1535	EFF25250SS	7353	EFF25250DS	8465	EFF25250DD	10125
400	240	4,1	32	860x600x1535	EFF47640SS	9427	EFF47640DS	10542	EFF47640DD	12203
400	340	5,8	17	860x600x1535	EFF47650SS	9925	EFF47650DS	11041	EFF47650DD	12702
400	390	6,7	12	860x600x1535	EFF47660SS	10339	EFF47660DS	11455	EFF47660DD	13115
600	500	8,6	16	860x600x1535	EFF67670SS	11330	EFF67670DS	13412	EFF67670DD	15212
800	600	10,3	10	860x600x1535	EFF87680SS	11644	EFF87680DS	13726	EFF87680DD	15926
900	650	11,2	64	880x600x1535	EFF97690SS	13085	EFF97690DS	15167	EFF97690DD	18288
900	690	11,9	59	880x600x1535	EFF976100SS	12971	EFF976100DS	15053	EFF976100DD	18174

* In accordance with each country's legislation



- ** IS = Single primary pump
- ** ID = Double primary pump
- ** SS = Single primary pump single charging pump
- ** DS = Double primary pump single charging pump
- ** DD = Double primary pump double charging pump

SolarFlowkit	Model	Article no.	Price
SolarFlow sensor kit for AquaEfficiency	Direct version only	KITSFPT1	246

Standard version equipment

- 3-port valve with 24 V actuator controlled via a 0/10 V signal
- Class A variable primary speed pump(s): single or double
- Class A variable charging speed pump(s): single or double, stainless steel or bronze
- AlfaNova® insulated fusion bonded heat exchanger (100% stainless steel)
- Isolating valves and additional connections on the back of the heat exchanger for CIP (Cleaning In Place) treatment
- 10 bar pressure relief valve on DHW side
- Three temperature sensors NTC20K
- IP54 electrical panel incorporating control (Micro 3000) and ModBus RTU RS485 management system
- Scaling and thermal efficiency functions
- Suitable for connection to a 230 V / 1 Ph / 50 Hz + Earth power supply
- Complies with European Directives 73/23 CE and DESP 97/23 CE - Art. 3.3, Low Voltage Directive (LVD) 73/23EEC mandated by 2006/95/EEC. Following norms have been applied: EN 60335 1- partial & EN60204-1 partial

More information of this product on Alfa Laval Anytime, our eBusiness for channel partners:

<https://ebusiness.alfalaval.com/alweb/view/category/12D1A99B-0041-44A9-BE96-3C87CA0223D2#>



AquaEfficiency Copper Brazed

Easy to install “Plug & play” **Copper Brazed** heat exchanger unit complete with 3-port control valve, variable speed pump(s) and ModBus controller used in conjunction with central condensation boiler plant, designed to deliver direct (instantaneous) or Indirect (semi instantaneous) Domestic Hot Water (DHW) supply to any collective building (no storage vessel required).

Key benefits

- + Copper Brazed insulated heat exchanger
- + Optimum condensation if combined with condensing boiler
- + Good solution against scaling in hard water areas
- + ModBus RTU RS485 communication facility
- + Class A pump on primary **AND** secondary

Nominal capacities and flow rates are given for: primary inlet 70°C and DHW 10 /60 °C
Available pressure on primary side: ≥ 5 Kpa

Operating limits	Design temperature *	Design pressure
Primary	110°C	10 bar
Secondary	100°C	10 bar

Direct (instantaneous) version

Model	Nominal capacity (kW)	DHW flowrate (m³/h)	DHW available pressure (Kpa)	L x W x H (mm)	IS**		ID**	
					Article no.	Price	Article no.	Price
200	100	1,7	13	860 x 600 x 1535	EFB26030IS	5130	EFB26030ID	6233
200	150	2,6	12	860 x 600 x 1535	EFB26040IS	5151	EFB26040ID	6255
200	190	3,3	16	860 x 600 x 1535	EFB26050IS	5244	EFB26050ID	6347
400	240	4,1	6	860 x 600 x 1535	EFB47640IS	6730	EFB47640ID	8094
400	340	5,8	8	860 x 600 x 1535	EFB47650IS	6933	EFB47650ID	8296
400	390	6,7	8	860 x 600 x 1535	EFB47660IS	7160	EFB47660ID	8525
600	500	8,6	9	860 x 600 x 1535	EFB67670IS	7927	EFB67670ID	10492
800	600	10,3	10	860 x 600 x 1535	EFB87680IS	8186	EFB87680ID	10750
900	650	11,2	10	880 x 600 x 1535	EFB97690IS	8367	EFB97690ID	10930
900	690	11,9	9	860 x 600 x 1535	EFB976100IS	8609	EFB976100ID	11174

Indirect (semi-instantaneous) version

Model	Nominal capacity (kW)	DHW flowrate (m³/h)	DHW available pressure (Kpa)	L x W x H (mm)	SS**		DS**		DD**	
					Article no.	Price	Article no.	Price	Article no.	Price
200	100	1,7	32	860x600x1535	EFB26030SS	6727	EFB26030DS	7797	EFB26030DD	9367
200	150	2,6	30	860x600x1535	EFB26040SS	6749	EFB26040DS	7818	EFB26040DD	9389
200	190	3,3	26	860x600x1535	EFB26050SS	6841	EFB26050DS	7910	EFB26050DD	9482
400	240	4,1	32	860x600x1535	EFB47640SS	8485	EFB47640DS	9817	EFB47640DD	11669
400	340	5,8	17	860x600x1535	EFB47650SS	8688	EFB47650DS	10019	EFB47650DD	11872
400	390	6,7	12	860x600x1535	EFB47660SS	8916	EFB47660DS	10247	EFB47660DD	12099
600	500	8,6	16	860x600x1535	EFB67670SS	9668	EFB67670DS	12232	EFB67670DD	14102
800	600	10,3	10	860x600x1535	EFB87680SS	9949	EFB87680DS	12512	EFB87680DD	14404
900	650	11,2	64	880x600x1535	EFB97690SS	11076	EFB97690DS	13640	EFB97690DD	16480
900	690	11,9	59	880x600x1535	EFB976100SS	11313	EFB976100DS	13883	EFB976100DD	16722

* In accordance with each country's legislation



- ** IS = Single primary pump
- ** ID = Double primary pump
- ** SS = Single primary pump single charging pump
- ** DS = Double primary pump single charging pump
- ** DD = Double primary pump double charging pump

SolarFlowkit	Model	Article no.	Price
SolarFlow sensor kit for AquaEfficiency	Direct version only	KITSFPT1	246

Standard version equipment

- 3-port valve with 24 V actuator controlled via a 0/10 V signal
- Class A variable primary speed pump(s): single or double
- Class A variable charging speed pump(s): single or double, stainless steel or bronze
- Copper Brazed insulated heat exchanger
- Isolating valves and additional connections on the back of the heat exchanger for CIP (Cleaning In Place) treatment
- 10 bar pressure relief valve on DHW side
- Three temperature sensors NTC20K
- IP54 electrical panel incorporating control (Micro 3000) and ModBus RTU RS485 management system
- Scaling and thermal efficiency functions
- Suitable for connection to a 230 V / 1 Ph / 50 Hz + Earth power supply
- Complies with European Directives 73/23 CE and DESP 97/23 CE - Art. 3.3, Low Voltage Directive (LVD) 73/23/EEC mandated by 2006/95/EEC. Following norms have been applied: EN 60335 1- partial & EN60204-1 partial

More information of this product on Alfa Laval Anytime, our eBusiness for channel partners:

<https://ebusiness.alfalaval.com/alweb/view/category/12D1A99B-0041-44A9-BE96-3C87CA0223D2#>



AquaEfficiency Gasketed

Easy to install "Plug & play" **Gasketed heat exchanger** unit complete with 3-port control valve, variable speed pump(s) and ModBus controller used in conjunction with central condensation boiler plant, designed to deliver direct (instantaneous) or Indirect (semi instantaneous) Domestic Hot Water (DHW) supply to any collective building (no storage vessel required).

Key benefits

- + Plate & gasket adaptable heat exchanger with extension flexibility
- + Optimum condensation if combined with condensing boiler
- + Good solution against scaling in hard water areas
- + ModBus RTU RS485 communication facility
- + Class A pump on primary **AND** secondary

Nominal capacities and flow rates are given for: primary inlet 70°C and DHW 10 /60 °C
Available pressure on primary side: ≥ 5 Kpa

Operating limits	Design temperature *	Design pressure
Primary	110°C	10 bar
Secondary	100°C	10 bar

Direct (instantaneous) version

Model	Nominal capacity (kW)	DHW flowrate (m ³ /h)	DHW available pressure (Kpa)	L x W x H (mm)	IS**		ID**	
					Article no.	Price	Article no.	Price
200	100	1,7	11	860 x 600 x 1535	EFP213IS	6802	EFP213ID	7954
200	150	2,6	9	860 x 600 x 1535	EFP217IS	6982	EFP217ID	8133
200	200	3,4	9	860 x 600 x 1535	EFP223IS	7202	EFP223ID	8352
400	250	4,3	9	860 x 600 x 1535	EFP425IS	7555	EFP425ID	8711
400	300	5,2	13	860 x 600 x 1535	EFP429IS	7681	EFP429ID	8838
400	350	6	12	860 x 600 x 1535	EFP435IS	7912	EFP435ID	9068
400	400	6,9	8	860 x 600 x 1535	EFP449IS	8395	EFP449ID	9798
600	450	7,7	15	860 x 600 x 1535	EFP637IS	8508	EFP637ID	10630
600	510	8,8	15	860 x 600 x 1535	EFP645IS	9048	EFP645ID	11171
800	550	9,5	15	860 x 600 x 1535	EFP849IS	9174	EFP849ID	11296
800	600	10,3	14	860 x 600 x 1535	EFP855IS	9394	EFP855ID	11516
900	640	11	14	880 x 600 x 1535	EFP961IS	9584	EFP961ID	11706
900	700	12	11	880 x 600 x 1535	EFP977IS	10088	EFP977ID	12211
900	750	12,9	11	880 x 600 x 1535	EFP997IS	11220	EFP997ID	13342

Indirect (semi-instantaneous) version

Model	Nominal capacity (kW)	DHW flowrate (m ³ /h)	DHW available pressure (Kpa)	L x W x H (mm)	SS**		DS**		DD**	
					Article no.	Price	Article no.	Price	Article no.	Price
200	100	1,7	52	860x600x1535	EFP213SS	8433	EFP213DS	9585	EFP213DD	11246
200	150	2,6	36	860x600x1535	EFP217SS	8611	EFP217DS	9764	EFP217DD	11424
200	200	3,4	36	860x600x1535	EFP223SS	8833	EFP223DS	9983	EFP223DD	11645
400	250	4,3	29	860x600x1535	EFP425SS	9185	EFP425DS	10342	EFP425DD	12003
400	300	5,2	17	860x600x1535	EFP429SS	9312	EFP429DS	10468	EFP429DD	12130
400	350	6	13	860x600x1535	EFP435SS	9543	EFP435DS	10698	EFP435DD	12359
400	400	6,9	10	860x600x1535	EFP449SS	10026	EFP449DS	11428	EFP449DD	13089
600	450	7,7	18	860x600x1535	EFP637SS	10278	EFP637DS	12400	EFP637DD	14201
600	510	8,8	10	860x600x1535	EFP645SS	10817	EFP645DS	12940	EFP645DD	14740
800	550	9,5	11	860x600x1535	EFP849SS	11154	EFP849DS	13277	EFP849DD	15477
800	600	10,3	6	860x600x1535	EFP855SS	11373	EFP855DS	13496	EFP855DD	15697
900	640	11	60	880x600x1535	EFP961SS	12484	EFP961DS	14606	EFP961DD	17727
900	700	12	58	880x600x1535	EFP977SS	12990	EFP977DS	15111	EFP977DD	18232
900	750	12,9	58	880x600x1535	EFP997SS	14119	EFP997DS	16242	EFP997DD	19363

* In accordance with each country's legislation



- ** IS = Single primary pump
- ** ID = Double primary pump
- ** SS = Single primary pump single charging pump
- ** DS = Double primary pump single charging pump
- ** DD = Double primary pump double charging pump

SolarFlowkit	Model	Article no.	Price
SolarFlow sensor kit for AquaEfficiency	Direct version only	KITSFPT1	246

Standard version equipment

- 3-port valve with 24 V actuator controlled via a 0/10 V signal
- Class A variable primary speed pump(s): single or double
- Class A variable charging speed pump(s): single or double, stainless steel or bronze
- M6 AISI 316 with clip-on EPDM FF gaskets heat exchanger
- Isolating valves and additional connections on the back of the heat exchanger for CIP (Cleaning In Place) treatment
- 10 bar pressure relief valve on DHW side
- Three temperature sensors NTC20K
- IP54 electrical panel incorporating control (Micro 3000) and ModBus RTU RS485 management system
- Scaling and thermal efficiency functions
- Suitable for connection to a 230 V / 1 Ph / 50 Hz + Earth power supply
- Complies with European Directives 73/23 CE and DESP 97/23 CE - Art. 3.3, Low Voltage Directive (LVD) 73/23/EEC mandated by 2006/95/EEC. Following norms have been applied: EN 60335 1- partial & EN60204-1 partial

More information of this product on Alfa Laval Anytime, our eBusiness for channel partners:
<https://ebusiness.alfalaval.com/alweb/view/category/12D1A99B-0041-44A9-BE96-3C87CA0223D2#>



AlfaPilot

Easy to install “Plug & play” intelligent flow control system dedicated to renewable energy installations with ModBus controller. This Multi Energy Pilot has to be installed on the primary return in parallel of a Primary storage tank. AlfaPilot is proposed only in association with:

- The Alfa Laval tap water system “AquaEfficiency”
- The Alfa Laval comfort heating system “AquaStar”, Micro STC” or “Mini City”

Key benefits

- + Ideal for heatpump or solar installation with Heat Interface Units type Alfa Laval AquaStar, Micro STC or tap water system AquaEfficiency
- + Priorities always the renewable energy source
- + Completely self-governing, always giving the optimum energy solution at any time
- + ModBus RTU RS 485 controller

Necessary data to design an AlfaPilot: Primary flow rate

Operating limits	Design temperature *	Design pressure
Primary	110°C / 1°C max. / min.	10 bar

Model	Control valve		Primary flow rate			Primary pressure loss			L x W x H (mm)	Article no.	Price
	Diameter	Kvs	m³/h	m³/h	m³/h	Kpa	Kpa	Kpa			
25	25	10	2	2.5	3.6	4	6	13	680 x 260 x 315	ASTB25	4093
32	32	16	3	4	7.2	4	6	20	720 x 260 x 315	ASTB32	4242
40	40	25	5	6	15	4	6	36	730 x 260 x 315	ASTB40	4263
50	50	40	8	13	22	4	11	30	800 x 260 x 315	ASTB50	4387

Options for AlfaPilot	Article no.	Price
External sensor NTC20K for Micro3000 controller	OPTSON3000	48

* In accordance with each country's legislation

Standard version equipment

- 3-port valve with 24 V actuator controlled via a 0/10 V signal
- One primary NTC20K sensor
- One PT1000 sensor for primary storage tank, including gloove of 300 mm, and 10 m long wirings
- One contact PT 1000 sensor with 10 m long wirings for outlet control
- IP54 electrical panel incorporating control (Micro 3000) and ModBus RTU RS485 management system
- Suitable for connection to a 230 V / 1 Ph / 50 Hz + Earth power supply
- Complies with European Directives 73/23 CE and DESP 97/23 CE - Art. 3.3, Low voltage Directive (LVD) 73/23EEC mandated by 2006/95/EEC. Following norms have been applied: EN 60335 1- partial EN60204-1 partial

More information of this product on Alfa Laval Anytime, our eBusiness for channel partners:

<https://ebusiness.alfalaval.com/alweb/view/category/A710B10A-C79A-8B1D-222D-A170009B6740#>



AquaProtect

Easy to install “Plug & play” anti-legionella tap water system used in conjunction with central boiler plant, designed to deliver legionella-free Domestic Hot Water (DHW) supply in the complete network of any collective building. Available in direct version (no storage vessel required) or indirect version (to be combined with a DHW storage vessel).

Key benefits

- + Ensures 70°C thermal treatment against legionella in incoming and circulation water in a simple way
- + Heat recovery concept to avoid extra energy for thermal disinfection
- + Easy accessible draining valve for DHW sample collection
- + For any water hardnesses
- + High reliable materials and low maintenance

Prices and article numbers on this page are only valid up till June 2015

Nominal capacities and flow rates are given for: primary inlet 80°C and DHW 10 / 60°C with disinfection at 70°C

Operating limits	Design temperature *	Design pressure
Primary	110°C	10 bar
Secondary	90°C	10 bar

Direct (instantaneous) version

Model	Heat supply (kW)	L x W x H (mm)	Weight (kg)	Article no.	Price
T1 - I 3P	174	1500 x 770 x 1460	280	AQPRT1I03P	14905
T1 - I 5P	291	1500 x 770 x 1460	320	AQPRT1I05P	16087
T1 - I 7P	407	1500 x 770 x 1460	350	AQPRT1I07P	18584
T1 - I 9P	523	1500 x 770 x 1460	370	AQPRT1I09P	19102
T1 - I 11P	640	1690 x 980 x 1660	530	AQPRT1I11P	19740
T1 - I 13P	756	1780 x 980 x 1660	560	AQPRT1I13P	20560

Indirect (semi-instantaneous) version

Model	Heat supply (kW)	L x W x H (mm)	Weight (kg)	Article no.	Price
T1 - SI 3P	174	1500 x 770 x 1460	300	AQPRT1SI03P	17618
T1 - SI 5P	291	1500 x 770 x 1460	350	AQPRT1SI05P	20101
T1 - SI 7P	407	1500 x 770 x 1460	370	AQPRT1SI07P	26399
T1 - SI 9P	523	1500 x 770 x 1460	390	AQPRT1SI09P	27798
T1 - SI 11P	640	1690 x 980 x 1660	550	AQPRT1SI11P	28541
T1 - SI 13P	756	1780 x 980 x 1660	600	AQPRT1SI13P	29490

Options for AquaProtect			
Control box	Description	Article no.	Price
Aquabox Protect	Plastic box, including control and management system, IP 43 rated, net disinfection	OPTARMAQPROT	2423
Aquabox Protect + 8 Relay	Plastic box, including control and management system, IP 43 rated, net disinfection with 8 relay card	OPTARMAQPROT8R	2681
insulation	Description	Article no.	Price
for model T1 3P & 5P	Metallic/rockwool insulation for AquaProtect	OPTJAQAQPR51	1256
for model T1 7P	Metallic/rockwool insulation for AquaProtect	OPTJAQAQPR52	1256
for model T1 9P	Metallic/rockwool insulation for AquaProtect	OPTJAQAQPR53	1256
for model T1 11P & 13P	Metallic/rockwool insulation for AquaProtect	OPTJAQAQPR61	1533

* In accordance with each country's legislation

** DIRECT anti-legionella systems: To guarantee 1 minute holding time, we recommend to combine the AquaProtect unit with a 300L storage tank. If a longer holding time is needed, please consult.

*** INDIRECT anti-legionella systems: The size of the storage tank will define the holding time; a thermal treatment tank and a storage tank could be necessary. Please consult.

Standard version equipment

- 3-port valve with 24 V actuator controlled via a 0/10 V signal
- Double headed cast iron primary pump factory fitted and electrically wired
- Two heat exchangers with T5 or M6 316 stainless steel plates with clip-on EPDM FF gaskets
- 10 bar pressure relief valve on DHW side
- Two immersion sensors
- IP43 electrical panel incorporating control (Micro 2000)
- Complies with European Directives 73/23 CE and DESP 97/23 CE - Art. 3.3, Low voltage Directive (LVD) 73/23EEC mandated by 2006/95/EEC. Following norms have been applied: EN 60335 1- partial EN60204-1 partial

More information of this product on Alfa Laval Anytime, our eBusiness for channel partners:

<https://ebusiness.alfalaval.com/alweb/view/category/5E95151D-6609-400C-99B8-6E162D26C4E8#>

Alfa Laval AquaFirst



Easy to install “Plug & play” **Gasketed heat exchanger** unit - to save time and money - complete with full remote -ModBus - communication, 3-port control valve and pump(s) used in conjunction with central boiler plant, designed to deliver direct (instantaneous) or Indirect (semi instantaneous) Domestic Hot Water (DHW) supply to any collective building (no storage vessel required).

Key benefits

- + Class A single or twin pump on primary in conformity with the new ERP rule
- + Stainless steel charging pumps standardized on secondary of indirect (semi instantaneous) units
- + Good solution against scaling in hard water areas
- + ModBus RTU RS485 communication facility
- + Plate & gasket adaptable heat exchanger with extension flexibility

Nominal capacities and flow rates are given for: 80°C primary inlet and 10 /55 °C secondary DHW side

Operating limits	Design temperature *	Design pressure
Primary	110°C	10 bar
Secondary	100°C	10 bar

Direct (instantaneous) version

Model	Nominal capacity (kW)	DHW flowrate (m ³ /h)	L x W x H (mm)	IS**		ID**	
				Article no.	Price	Article no.	Price
2000	35	0,7	460x400x970	FI2007IS	3393	FI2007ID	4123
2000	105	2,0	460x400x970	FI2017IS	3449	FI2017ID	4184
4000	195	3,7	460x400x970	FI4027IS	4287	FI4027ID	5639
4000	285	5,5	460x400x970	FI4045IS	4379	FI4045ID	5809
6000	320	6,2	1000x500x1400	FI6011IS	4680	FI6011ID	5974
6000	470	9,0	1000x500x1400	FI6017IS	6870	FI6017ID	8300
8000	650	12,5	1000x500x1400	FI8031IS	8179	FI8031ID	9593
8000	800	15,4	1000x500x1400	FI8055IS	8676	FI8055ID	10100

Indirect (semi-instantaneous) version

Model	Nominal capacity (kW)	DHW flowrate (m ³ /h)	L x W x H (mm)	SS**		DS**		DD**	
				Article no.	Price	Article no.	Price	Article no.	Price
2000	35	0,7	460x480x1040	FI2007SS	3903	FI2007DS	4633	FI2007DD	5207
2000	105	2,0	460x480x1040	FI2017SS	3959	FI2017DS	4694	FI2017DD	5268
4000	195	3,7	460x480x1040	FI4027SS	4972	FI4027DS	6324	FI4027DD	7179
4000	285	5,5	460x480x1040	FI4045SS	5064	FI4045DS	6494	FI4045DD	7349
6000	320	6,2	1150x500x1400	FI6011SS	5200	FI6011DS	6659	FI6011DD	7514
6000	470	9,0	1150x500x1400	FI6017SS	7736	FI6017DS	9166	FI6017DD	9895
8000	650	12,5	1150x500x1400	FI8031SS	9044	FI8031DS	10459	FI8031DD	11188
8000	750	14,3	1150x500x1400	FI8055SS	9927	FI8055DS	11352	FI8055DD	12200

** IS = Single primary pump

** ID = Double primary pump

** SS = Single primary pump single charging pump

** DS = Double primary pump single charging pump

** DD = Double primary pump double charging pump

Standard tap water systems – Indirect systems

Insulations for AquaFirst	Model	Article no.	Price
Insulation for AquaFirst heat exchanger.To be assembled on site	2000 & 4000	CALFIRST	343
Insulation for AquaFirst heat exchanger.To be assembled on site	6000 & 8000	CALFIRSTM6	430
Set of 5 insulations for AquaFirst M3	2000 & 4000	KITCALM3FI	1717
Set of 4 insulations for AquaFirst M6	6000 & 8000	KITCALM6FI	1695

* In accordance with each country's legislation

- For other temperature program and/or capacity, please make use of the Quick Selection Tables in our product brochure in Anytime (Alfa Laval's extranet)

Standard version equipment

- 3-port valve with the dedicated 15 seconds speed 0-10 V 24V actuator
- Single or double headed **Class A cast iron primary pump** factory fitted and electrically wired
- Single or double headed **Stainless Steel charging pump** factory fitted and electrically wired
- M3 HT or M6M ML/MH stainless steel 0,5 mm plates 316 with EPDMFF clip-on gaskets
- 10 bar pressure relief valve on DHW side and NTC20K temperature sensors with stainless steel sleeve
- ModBus RTU RS 485 controller
- Suitable for connection to a 230 V / 1 Ph / 50 Hz + Earth power supply
- Complies with European Directives 73/23 CE and DESP 97/23 CE - Art. 3.3, Low voltage Directive (LVD) 73/23EEC mandated by 2006/95/EEC. Following norms have been applied: EN 60335 1- partial EN60204-1 partial

More information of this product on Alfa Laval Anytime, our eBusiness for channel partners:

<https://ebusiness.alfalaval.com/alweb/view/category/F04140A2-259B-8351-4959-A23100B72195#>



AquaCompact

Heat exchanger unit with 2-port or 3-port control valve, fixed to a secondary storage tank designed to deliver indirect Domestic Hot Water (DHW). Can be combined with the AquaTank Stainless Steel 316 Ti (300 to 1500L).

Key benefits

- + Space saving
- + Only low to mid boiler capacity needed
- + Simple solution for low budgets
- + Connection possible to district heating network or to local boiler

Standard versions (photo 1, 2 and 3) do not have a primary kit but this can be ordered as an option. Three primary kit options available:

- 2-port valve: Self-actuated (photo 4)
- 2-port valve: Electronic (photo 5)
- 3-port valve: Electronic (photo 6)

Selection

AquaCompact has to be configured in our selection tool "AlfaSelect". Please contact your local Alfa Laval company.

AquaCompact standard versions



AquaCompact with primary kits versions



Standard version equipment

- Copper Brazed, AlfaNova or Gasketed plate heat exchanger (photo 1, 2 and 3)
- Insulation (Copper Brazed AlfaNova: included / Gasketed : optional)
- Charging pump
- Balancing valve
- 10 bar pressure relief valve
- Isolating valve and connection pipework and flexible(s)
- Two additional CIP 3/4" connections (Copper Brazed and AlfaNova versions only)

More information of this product on Alfa Laval Anytime, our eBusiness for channel partners:
<https://ebusiness.alfalaval.com/alweb/view/category/D3BFAE00-2DFE-4E29-B600-D3EDF2322E30#>

Storage Tanks



AquaTank Stainless steel 10 bar

Domestic hot water storage vessel made of 100% 316 stainless steel type. AquaTank Stainless steel is approved according to PED and manufactured according to directive 97/23/EC.

Key benefits

- + Excellent quality
- + Very long lifetime
- + Extremely hygienic; no galvanic corrosion
- + Energy saving insulations
- + Easy to install

Inspection opening:

- up to 500 L: one inspection opening of 120 mm
- > 500 L: one inspection opening of 120 mm or 400 mm (manhole)

Max. operating pressure bar gauge	10
Max. operating temperature °C	95

Volume (L)	Description	Inspection opening (mm)	Connections (tw / cw / circ.)	Immersion heater connection	D (mm)	d (mm)	Height (mm)	Weight (kg)	Article no.	Price
150	Standard	120	1" / 1" / 1"	-	700	500	1132	44	AQT015SB4	2047
200	Standard	120	1" / 1" / 1"	-	700	500	1507	51	AQT020SB4	2284
300	Standard	120	2" / 2" / 1"	1 x 2"	750	550	1560	90	AQT030SB4	2758
500	Standard	120	2" / 2" / 1"	1 x 2"	850	650	1815	120	AQT050SB4	3303
500	Additional connection	120	2" / 2" / 1"	2 x 2"	850	650	1815	120	AQT052SB4	3398
750	Standard	120	2" / 2" / 1"	2 x 2"	950	750	2105	180	AQT075SB4	4669
750	Additional connection	120	2" / 2" / 1"	3 x 2"	950	750	2102	180	AQT073SB4	4761
750	Manhole	400	2" / 2" / 1"	2 x 2"	950	750	2105	180	AQT075SC4	6969
750	For UK *	120	2" / 2" / 1"	2 x 2"	950	750	2105	180	AQT075SB4U	4707
1000	Standard	120	2" / 2" / 1"	3 x 2"	1050	850	2180	215	AQT100SB5	6292
1000	Manhole	400	2" / 2" / 1"	3 x 2"	1050	850	2180	215	AQT100SC5	8636
1000	For UK *	120	2" / 2" / 1"	3 x 2"	1050	850	2180	215	AQT100SB5U	6330
1500	Standard	400	2" / 2" / 1"	-	1240	1000	2245	295	AQT150SC5	10825
1500	For UK *	400	2" / 2" / 1"	-	1240	1000	2245	295	AQT150SC5U	10865
2000	Standard	400	2" / 2" / 2"	-	1340	1100	2604	345	AQT200SC5	13262
2000	For UK *	400	2" / 2" / 2"	-	1340	1100	2545	345	AQT200SC5U	13302
2500	Standard	400	DN50 / DN50 / 1¼"	-	1540	1300	2405	470	AQT250SC5	17102
3000	Standard	400	DN50 / DN50 / 1¼"	-	1540	1300	2903	550	AQT300SC5	19311
4000	Standard	400	DN65 / DN65 / 1¼"	-	1540	1300	3655	660	AQT400SC5	23863

Abbreviations

tw = tap water / cw = cold water / circ. = circulation

D = outer diameter incl. insulation

d = outer diameter of tank

* for UK = 2" airvent on top

Dimensions and weights are target values

Insulation :Eurofire class D S1, do/EN 13501-1 (or B2 / DIN4102)

- 150 - 300L: Neodul 80/20 (100mm) covered with a polyester hard plastic (energy efficiency class B)
- 500 - 1000L: Neodul 80/20 (100mm) covered with a polyester hard plastic (energy efficiency class C)
- 1500 - 4000L: Neodul 100/20 (120mm) covered with a polyester hard plastic (energy efficiency class C)

More information of this product on Alfa Laval Anytime, our eBusiness for channel partners:

<https://ebusiness.alfalaval.com/alweb/view/category/C5C431F6-0435-42F8-8E65-864BF46348A4#>



AquaTank Stainless steel 10 bar with heating coil

Domestic hot water storage vessel made of 100% 316 stainless steel type with heating coil made of stainless steel 316, Tube DN25.

Approved according to PED and manufactured according to directive 97/23/EC.

Key benefits

- + Excellent quality
- + Very long lifetime
- + Extremely hygienic; no galvanic corrosion
- + Easy to install

Inspection opening

- up to 200L: 2"
- > 200L: 120 mm

	Heating coil	Vessel
Max. operating pressure bar gauge	25	10
Max. operating temperature °C (2)	200	95

Volume (L)	Inspection opening	Connections (tw / cw / circ.)	Connection HC	D (mm)	d (mm)	Height (mm)	Weight (kg)	Article no.	Price
125	2"	1" / 1" / 1/2"	2 x 1"	700	500	995	40	AQTHC012SA4	2257
160	2"	1" / 1" / 1/2"	2 x 1"	700	500	1245	50	AQTHC016SA4	2558
200	2"	1" / 1" / 1/2"	2 x 1"	700	500	1495	58	AQTHC020SA4	2813
350	120 mm	1¼" / 1¼" / 3/4"	2 x 1"	750	550	1725	85	AQTHC035SB4	3853
500	120 mm	1¼" / 1¼" / 3/4"	2 x 1"	850	650	1745	95	AQTHC050SB4	4411
750	120 mm	2" / 2" / 1"	2 x 1"	1000	800	1830	145	AQTHC075SB4	6520
1000	120 mm	2" / 2" / 1"	2 x 1"	1050	850	2080	195	AQTHC100SB5	8225

Abbreviations

tw = tap water / cw = cold water / circ. = circulation

HC = Heating Coil

D = outer diameter incl. insulation

d = outer diameter of tank

Dimensions and weights are target values

Insulation / Eurofire class D S1, do/EN 13501-1 (or B2 / DIN4102)

- 125 - 200L: Neodul 80/20 (100mm) covered with a polyester hard plastic (energy efficiency class B)
- 350 - 1000L: Neodul 80/20 (100mm) covered with a polyester hard plastic (energy efficiency class C)

More information of this product on Alfa Laval Anytime, our eBusiness for channel partners:

<https://ebusiness.alfalaval.com/alweb/view/category/C5C431F6-0435-42F8-8E65-864BF46348A4#>

Secondary storage tanks

AquaTank Enamel 7 bar M1/M0

Domestic hot water storage vessel made of enamel (glass-lined) 7 bar.

AquaTank Enamel (7 bar) is approved according to PED and manufactured according to directive 97/23/EC. Delivery of magnesium anode included, assembling at site.



Key benefits

- + Good value for money
- + Easy maintenance thanks to tanks' polished inside surface
- + High resistance to any chemicals
- + Energy saving insulations conform French regulations
- + Easy to install

Inspection opening

- 110, 260 or 400 mm following volume

Max. operating pressure bar gauge	7
Max. operating temperature °C	95

Volume (L)	Insulation (mm)		Inspection opening (mm)	Connections (tw / cw / circ.)	D (mm)	d (mm)	Height (mm)	Weight (kg)	Article no.	Price
300	M1	50	110	2" / 2" / 1"	650	549	1718	107	AQT030EB1	1291
300	M1	50	260	2" / 2" / 1"	650	549	1718	107	AQT030ED1	1993
300	M1	100	110	2" / 2" / 1"	750	549	1718	107	AQT030EB1100	1322
300	M1	100	260	2" / 2" / 1"	750	549	1718	107	AQT030ED1100	2024
300	M0	50	110	2" / 2" / 1"	650	549	1718	127	AQT030EB0	1799
300	M0	50	260	2" / 2" / 1"	650	549	1718	127	AQT030ED0	2500
300	M0	100	110	2" / 2" / 1"	750	549	1718	127	AQT030EB0100	2065
300	M0	100	260	2" / 2" / 1"	750	549	1718	127	AQT030ED0100	2766
500	M1	50	110	2" / 2" / 1"	730	630	2046	137	AQT050EB1	1681
500	M1	50	260	2" / 2" / 1"	730	630	2046	137	AQT050ED1	2315
500	M1	100	110	2" / 2" / 1"	830	630	2046	137	AQT050EB1100	1744
500	M1	100	260	2" / 2" / 1"	830	630	2046	137	AQT050ED1100	2377
500	M0	50	110	2" / 2" / 1"	730	630	2046	160	AQT050EB0	2324
500	M0	50	260	2" / 2" / 1"	730	630	2046	160	AQT050ED0	2958
500	M0	100	110	2" / 2" / 1"	830	630	2046	160	AQT050EB0100	2648
500	M0	100	260	2" / 2" / 1"	830	630	2046	160	AQT050ED0100	3281
750	M1	50	110	2" / 2" / 1"	890	790	1951	233	AQT075EB1	2485
750	M1	50	400	2" / 2" / 1"	890	790	1951	233	AQT075EC1	3296
750	M1	100	110	2" / 2" / 1"	990	790	1951	233	AQT075EB1100	2523
750	M1	100	400	2" / 2" / 1"	990	790	1951	233	AQT075EC1100	3335
750	M0	50	110	2" / 2" / 1"	890	790	1951	255	AQT075EB0	3197
750	M0	50	400	2" / 2" / 1"	890	790	1951	255	AQT075EC0	4009
750	M0	100	110	2" / 2" / 1"	990	790	1951	255	AQT075EB0100	3551
750	M0	100	400	2" / 2" / 1"	990	790	1951	255	AQT075EC0100	4363
1000	M1	50	110	2" / 2" / 1"	890	790	2304	263	AQT100EB1	2774
1000	M1	50	400	2" / 2" / 1"	890	790	2304	263	AQT100EC1	3748
1000	M1	100	110	2" / 2" / 1"	990	790	2304	263	AQT100EB1100	2816
1000	M1	100	400	2" / 2" / 1"	990	790	2304	263	AQT100EC1100	3791
1000	M0	50	110	2" / 2" / 1"	990	790	2304	293	AQT100EB0	3632
1000	M0	50	400	2" / 2" / 1"	990	790	2304	293	AQT100EC0	4607
1000	M0	100	110	2" / 2" / 1"	990	790	2304	293	AQT100EB0100	4046
1000	M0	100	400	2" / 2" / 1"	990	790	2304	293	AQT100EC0100	5020

Volume (L)	Insulation (mm)		Inspection opening (mm)	Connections (tw / cw / circ.)	D (mm)	d (mm)	Height (mm)	Weight (kg)	Article no.	Price
1500	M1	50	110	2" / 2" / 1"	1200	1100	2130	344	AQT150EB1	3768
1500	M1	50	400	2" / 2" / 1"	1200	1100	2130	344	AQT150EC1	4653
1500	M1	100	110	2" / 2" / 1"	1300	1100	2130	344	AQT150EB1100	3815
1500	M1	100	400	2" / 2" / 1"	1300	1100	2130	344	AQT150EC1100	4700
1500	M0	50	110	2" / 2" / 1"	1200	1100	2130	374	AQT150EB0	4943
1500	M0	50	400	2" / 2" / 1"	1200	1100	2130	374	AQT150EC0	5828
1500	M0	100	110	2" / 2" / 1"	1300	1100	2130	374	AQT150EB0100	5430
1500	M0	100	400	2" / 2" / 1"	1300	1100	2130	374	AQT150EC0100	6314
2000	M1	50	400	2" / 2" / 1"	1200	1100	2315	371	AQT200EC1	5288
2000	M1	100	400	2" / 2" / 1"	1300	1100	2315	371	AQT200EC1100	5333
2000	M0	50	400	2" / 2" / 1"	1200	1100	2315	400	AQT200EC0	6496
2000	M0	100	400	2" / 2" / 1"	1300	1100	2315	400	AQT200EC0100	7014
2500	M1	50	400	2" / 2" / 1"	1500	1400	2190	501	AQT250EC1	6533
2500	M1	100	400	2" / 2" / 1"	1600	1400	2190	501	AQT250EC1100	6581
2500	M0	50	400	2" / 2" / 1"	1500	1400	2190	550	AQT250EC0	8018
2500	M0	100	400	2" / 2" / 1"	1600	1400	2190	550	AQT250EC0100	8634
3000	M1	50	400	2" / 2" / 1"	1500	1400	2319	540	AQT300EC1	7455
3000	M1	100	400	2" / 2" / 1"	1600	1400	2319	540	AQT300EC1100	7522
3000	M0	50	400	2" / 2" / 1"	1500	1400	2319	600	AQT300EC0	8969
3000	M0	100	400	2" / 2" / 1"	1600	1400	2319	600	AQT300EC0100	9588

Abbreviations

tw = tap water / cw = cold water / circ. = circulation / D = outer diameter incl. insulation / d = outer diameter of tank
 All anodes, support feet of vessels and the insulations are delivered separately and need to be assembled at site.
 Dimensions and weights are target values.

Insulation

- M1: 50 or 100 mm glass wool covered with PVC jacket, European fireclass B.
- M0: 50 or 100 mm rockwool cladded with aluminium metal plate, European fireclass A.

More information of this product on Alfa Laval Anytime, our eBusiness for channel partners:

<https://ebusiness.alfalaval.com/alweb/view/category/C5C431F6-0435-42F8-8E65-864BF46348A4#>



Primary Tank 5 bar

Primary storage vessel or thermal store, made of carbon steel, suitable to store water from heating loops, solar circuits and so on the boiler side
It reduces the boiler usage and improves system efficiency through the storage of large quantities of heated primary water, can be combined with any tap water system. Primary Tank is manufactured according to directive 97/23/EC.

Key benefits

- + Energy saving as reduces the boiler usage of any energy source
- + Acts as a buffer on the primary side to meet the demand peaks for DHW
- + Low total costs of ownership
- + Hygienic solution, no risk of legionella
- + Can be combined with any direct or indirect tap water system, as AquaEfficiency or AquaFirst

Max. operating pressure bar gauge	5
Max. operating temperature °C	100

Volume (L)	Insulation (mm)	Connections DN cw / hw	D (mm)	d (mm)	Height (mm)	Weight (kg)	Article no.	Price
300	M1	2" / 2"	830	630	1417	68	AQTVP030M1100	944
300	M0	2" / 2"	830	630	1417	68	AQTVP030M0100	1588
500	M1	2" / 2"	830	630	1996	96	AQTVP050M1100	1120
500	M0	2" / 2"	830	630	1417	68	AQTVP050M0100	1910
750	M1	2" / 2"	990	790	1905	120	AQTVP075M1100	1456
750	M0	2" / 2"	830	630	1417	68	AQTVP075M0100	2296
1000	M1	2" / 2"	990	790	2258	160	AQTVP100M1100	1697
1000	M0	2" / 2"	830	630	1417	68	AQTVP100M0100	2762
1500	M1	2" / 2"	1300	1100	2083	244	AQTVP150M1100	2412
1500	M0	2" / 2"	830	630	1417	68	AQTVP150M0100	3810
2000	M1	2" / 2"	1300	1100	2271	264	AQTVP200M1100	2563
2000	M0	2" / 2"	830	630	1417	68	AQTVP200M0100	4016
2500	M1	2" / 2"	1600	1400	2140	367	AQTVP250M1100	3239
2500	M0	2" / 2"	830	630	1417	68	AQTVP250M0100	4805
3000	M1	2" / 2"	1600	1400	2273	398	AQTVP300M1100	3599
3000	M0	2" / 2"	830	630	1417	68	AQTVP300M0100	5163

Abbreviations

tw = tap water / cw = cold water / circ. = circulation

d = outer diameter of tank

Dimensions and weights are target values.

Insulation

- M1: 100 mm glass wool covered with PVC jacket, European fireclass B.
- M0: 100 mm rockwool cladded with aluminium metal plate, European fireclass A.

More information of this product on Alfa Laval Anytime, our eBusiness for channel partners:

<https://ebusiness.alfalaval.com/alweb/view/category/AF853007-8E76-4905-B830-9F61F537EBEF#>

Pool heaters



Aquapool Titanium

Packaged compact equipment designed for the automatic heating of swimming pool water using a primary fed by low pressure hot water (centralised heating system, boiler, etc.) as a heating source.

Key benefits

- + The Alfa Laval "Plug & play solution": easy to install, easy to maintain
- + Minimum of maintenance
- + Large choice for any swimming pool size
- + Titanium version: ideal for salt swimming pool treatment or chlorine treatment when [cl-] > 50 ppm

Prices and article numbers on this page are only valid up till June 2015

Nominal capacities and flow rates above are given for primary inlet temperature 90°C and swimming pool water inlet / outlet temperatures: 27/47°C

Operating limits	Primary	Secondary
Max. operating pressure bar	10	2
Max. operating temperature °C *	110	60

Model	Nominal capacities (kW)	Primary flow rate (l/min.)	Swimming pool flow rate (l/min.)	Pressure drop SP side (kPa)	L x W x H (mm)	Weight (kg)	Article no.	Price
100-07 TI	30	8,33	21,7	41	307 x 580 x 805	67	TSPG10007T	3272
100-11 TI	52	15,0	36,7	43	307 x 580 x 805	67	TSPG10011T	3402
100-17 TI	82	21,7	58,3	43	307 x 580 x 805	68	TSPG10017T	3592
100-23 TI	111	28,3	80,0	43	307 x 580 x 805	68	TSPG10023T	3784
100-29 TI	140	36,7	100,0	43	307 x 580 x 805	69	TSPG10029T	3975
100-35 TI	166	43,3	118,3	42	307 x 580 x 805	70	TSPG10035T	4165
100-41 TI	194	51,7	138,3	42	307 x 580 x 805	72	TSPG10041T	4357
100-49 TI	222	58,3	158,3	41	307 x 580 x 805	73	TSPG10049T	4613
100-55 TI	246	63,3	176,7	41	307 x 580 x 805	76	TSPG10055T	4816

* In accordance with each country's legislation
 Frame single wall plate maximum capacity: 60.

Standard version equipment

- Two manual isolation valves - Ball type - FPT connection
- SH Cast iron pump factory fitted and electrically wired
- SH Cast iron pump factory fitted and electrically wired
- Titanium M3 HT single wall plates with clip-on EPDM gaskets
- Three piece PVC connectors at the inlet and outlet connections suitable for glued pipework assembly
- Immersion temperature sensor fitted into a PVC pocket
- IP 55 electrical panel with door mounted thermostat, start/stop switch, power on light
- The electronic thermostat displays the swimming pool water inlet temperature
- Suitable for connection to a 230 V / 1 Ph / 50 Hz + Earth power supply
- Compliance with the European Directives 73/23 CE and DESP 97/23 CE

More information of this product on Alfa Laval Anytime, our eBusiness for channel partners:
<https://ebusiness.alfalaval.com/alweb/view/category/4C813E60-0C25-4BA8-A115-C820328C6D95#>

Aquapool Stainless Steel

Packaged compact equipment designed for the automatic heating of swimming pool water using a primary fed by low pressure hot water (centralised heating system, boiler, etc.) as a heating source.



Key benefits

- + The Alfa Laval "Plug & play solution": easy to install, easy to maintain
- + Minimum of maintenance
- + Large choice for any swimming pool size
- + Ideal for chlorine swimming pool treatment when [cl-] < 50 ppm

Prices and article numbers on this page are valid up till June 2015

Nominal capacities and flow rates above are given for primary inlet temperature 90°C and swimming pool water inlet / outlet temperatures: 27/47 °C.

Operating limits	Primary	Secondary
Max. operating pressure bar	10	2
Max. operating temperature °C *	110	60

Model	Nominal capacities (kW)	Primary flow rate (l/min.)	Swimming pool flow rate (l/min.)	Pressure drop SP side (kPa)	L x W x H (mm)	Shipping weight (kg)	Article no.	Price
100-07 SS	30	8,33	21,7	41	307 x 580 x 805	67	TSPG10007	2790
100-11 SS	52	15,0	36,7	43	307 x 580 x 805	67	TSPG10011	2853
100-17 SS	82	21,7	58,3	43	307 x 580 x 805	68	TSPG10017	2945
100-23 SS	111	28,3	80,0	43	307 x 580 x 805	68	TSPG10023	2965
100-29 SS	140	36,7	100,0	43	307 x 580 x 805	69	TSPG10029	3164
100-35 SS	166	43,3	118,3	42	307 x 580 x 805	70	TSPG10035	3252
100-41 SS	194	51,7	138,3	42	307 x 580 x 805	72	TSPG10041	3340
100-49 SS	222	58,3	158,3	41	307 x 580 x 805	73	TSPG10049	3388
100-55 SS	246	63,3	176,7	41	307 x 580 x 805	76	TSPG10055	3434

* In accordance with each country's legislation
Frame single wall plate maximum capacity: 60.

Standard version equipment

- Two manual isolation valves - Ball type - FPT connection
- SH Cast iron pump factory fitted and electrically wired
- One non-return valve at the pump discharge side
- Stainless steel M3 HT single wall plates with clip-on EPDM FF gaskets
- Three piece PVC connectors at the inlet and outlet connections suitable for glued pipework assembly
- Immersion temperature sensor fitted into a PVC pocket
- IP 55 electrical panel with door mounted thermostat, start/stop switch, power on light
- The electronic thermostat displays the swimming pool water inlet temperature
- Suitable for connection to a 230 V / 1 Ph / 50 Hz + Earth power supply
- Compliance with the European Directives 73/23 CE and DESP 97/23 CE

More information of this product on Alfa Laval Anytime, our eBusiness for channel partners:
<https://ebusiness.alfalaval.com/alweb/view/category/4C813E60-0C25-4BA8-A115-C820328C6D95#>

Pressurisation sets

Pressosmart MP 195

Compact packaged pressurisation set including:

- Built in 195 litre epoxy painted mild steel expansion vessel
- Single headed multicellular centrifugal pump
- Brass pressure control valve
- Solenoid valve with 230V/50Hz coil
- High and low flow level contacts
- Pressure transducer and Micro 2000 PCS control monitoring system

Complies with European Directives 73/23 CE and PED 97/23 CE - Art. 3.3
Fully assembled, wired, electrically hydraulically tested



Operating limits	Water
Max. operating pressure bar	5
Max. operating temperature °C	95

Model	Pump(s)	PCV(s)*	Max static height (mWG)	Hydraulic connection	L x W x H (mm)	Weight (kg)	Article no.	Price
MP195 L1	1	1	35	DN25 (1")	520 x 800 x 1070	95	MP195NL	4397
MP195 L2	1	1	15 - 45	DN25 (1")	520 x 800 x 1070	98	MP195NL4150	4550

Options for Pressosmart MP 195	Article no.	Price
89 µm core water strainer - automatic cold feed (loose)	OPTMPFILT	159
Impulse meter (water leak detection)	OPTMPDETECT	293
Cold water feed bypass kit	BYPASMP	146
8 Relay board	OPT8RELAYMP	302
Software and download cable to extract data	OPTCABLE	352
Flooding detector	INONDMP	290

* Pressure control valve

More information of this product on Alfa Laval Anytime, our eBusiness for channel partners:
<https://ebusiness.alfalaval.com/alweb/view/category/3B4185AC-0944-4A4B-BFC8-7FF4093F917B#>

Pressosmart MP 4

Split system type pressurisation set to be piped up to a remote expansion vessel on site. Two types of expansion vessels are proposed:

- Closed expansion vessel
- Open expansion vessel

Pump module main components:

- One single headed multicellular centrifugal pump
- One brass pressure control valve
- Solenoid valve with 230V/50Hz coil
- Piezo electric pressure transducer (if combined with Closed Expansion Vessels)
- Isolation valves
- Micro 2000 PCS control and monitoring system
- Float contacts for Open expansion vessel are NOT included in pump module, see option "OPTMPFLO" below
- No float contacts are needed for Closed expansion vessels

Complies with European Directives 73/23 CE and PED 97/23 CE - Art. 3.3
Fully assembled, wired, electrically hydraulically tested



Operating limits	Water
Max. operating pressure bar	6
Max. operating temperature °C	95

Pump module	Static height	Pump(s)	PCV(s)*	Hydraulic connection	L x W x H (mm)	Weight (kg)	Article no.	Price
MP4N 3-16	5-15	1	1	DN25 (1")	595 x 500 x 1460	50	MP4N316	3339
MP4N 4-16	5-25	1	1	DN25 (1")	595 x 500 x 1460	50	MP4N416	3391
MP4N 5-16	15-35	1	1	DN25 (1")	595 x 500 x 1460	50	MP4N516	3434
MP4N 6-16	25	1	1	DN25 (1")	595 x 500 x 1460	50	MP4N616	3534
MP4N 6-16	26-45	1	1	DN25 (1")	595 x 500 x 1460	50	MP4N6163150	3534
MP4N 7-16	25	1	1	DN25 (1")	595 x 500 x 1460	53	MP4N716	3738
MP4N 7-16	26-45	1	1	DN25 (1")	595 x 500 x 1460	53	MP4N7163150	3738
MP4N 7-16	46-55	1	1	DN25 (1")	595 x 500 x 1460	53	MP4N7165160	3738

Options for Pressosmart MP 4	Article no.	Price
8 litre anti-hammer vessel - work pressure: 8 Bar max.	VASABMP01	161
89 µm core water strainer - automatic cold feed (loose)	OPTMPFILT	159
Impulse meter (water leak detection)	OPTMPDETECT	293
Cold water feed bypass kit	BYPASMP	146
8 Relay board fitted in the control box	OPT8RELAYMP	323
Software and download cable to extract data	OPTCABLE	352
Flooding detector	INONDMP	290
Set of 2 float contacts	OPTMPFLO	310

* Pressure control valve
- For vessels see chapters "Closed expansion vessels" and "Open expansion vessels"

More information of this product on Alfa Laval Anytime, our eBusiness for channel partners:
<https://ebusiness.alfalaval.com/alweb/view/category/3B4185AC-0944-4A4B-BFC8-7FF4093F917B#>



Pressosmart MP 5

Split system type pressurisation set to be piped up to a remote expansion vessel on site. Two types of expansion vessels are proposed:

- Closed expansion vessel
- Open expansion vessel

Pump module main components:

- Two single headed multicellular centrifugal pump
- One or two brass pressure control valves
- Solenoid valve with 230V/50Hz coi
- Piezo electric pressure transducer (if combined with Closed expansion vessels)
- Isolation valves
- Micro 2000 PCS control and monitoring system
- Float contacts for Open expansion vessel are NOT included in pump module, see option "OPTMPFLO" below
- No float contacts are needed for Closed expansion vessels

Complies with European Directives 73/23 CE and PED 97/23 CE - Art. 3.3
Fully assembled, wired, electrically hydraulically tested

Operating limits	Water
Max. operating pressure bar	7
Max. operating temperature °C	95

Pump module	Static height	Pump(s)	PCV(s)*	Hydraulic connection	L x W x H (mm)	Weight (kg)	Article no.	Price
MP5N 3-16	15	2	1	DN40 (1 1/2")	595 x 500 x 1460	72	MP5N316	4008
MP5N 4-16	25	2	1	DN40 (1 1/2")	595 x 500 x 1460	77	MP5N416	4081
MP5N 5-16	25	2	1	DN40 (1 1/2")	595 x 500 x 1460	77	MP5N516	4166
MP5N 5-16	26-35	2	1	DN40 (1 1/2")	595 x 500 x 1460	77	MP5N5163140	4166
MP5N 6-16	25	2	1	DN40 (1 1/2")	595 x 500 x 1460	79	MP5N616	4379
MP5N 6-16	26-45	2	1	DN40 (1 1/2")	595 x 500 x 1460	79	MP5N6163150	4379
MP5N 7-16	25	2	1	DN40 (1 1/2")	595 x 500 x 1460	80	MP5N716	4873
MP5N 7-16	26-45	2	1	DN40 (1 1/2")	595 x 500 x 1460	80	MP5N7163150	4873
MP5N 7-16	46-55	2	1	DN40 (1 1/2")	595 x 500 x 1460	80	MP5N7165160	4873
MP5N 8-16	5-25	2	1	DN40 (1 1/2")	595 x 500 x 1460	85	MP5N816	5139
MP5N 8-16	26-45	2	1	DN40 (1 1/2")	595 x 500 x 1460	85	MP5N8163150	5139
MP5N 8-16	46-65	2	1	DN40 (1 1/2")	595 x 500 x 1460	85	MP5N8165170	5139
MP5N 3-26	15	2	2	DN40 (1 1/2")	595 x 500 x 1460	73	MP5N326	4656
MP5N 4-26	25	2	2	DN40 (1 1/2")	595 x 500 x 1460	78	MP5N426	4753
MP5N 5-26	25	2	2	DN40 (1 1/2")	595 x 500 x 1460	78	MP5N526	4835
MP5N 5-26	26-35	2	2	DN40 (1 1/2")	595 x 500 x 1460	78	MP5N5263140	4835
MP5N 6-26	25	2	2	DN40 (1 1/2")	595 x 500 x 1460	80	MP5N626	5040
MP5N 6-26	26-45	2	2	DN40 (1 1/2")	595 x 500 x 1460	80	MP5N6263150	5040
MP5N 7-26	25	2	2	DN40 (1 1/2")	595 x 500 x 1460	81	MP5N726	5408
MP5N 7-26	26-45	2	2	DN40 (1 1/2")	595 x 500 x 1460	81	MP5N7263150	5408
MP5N 7-26	46-55	2	2	DN40 (1 1/2")	595 x 500 x 1460	81	MP5N7265160	5408
MP5N 8-26	5-25	2	2	DN40 (1 1/2")	595 x 500 x 1460	86	MP5N826	5721
MP5N 8-26	26-45	2	2	DN40 (1 1/2")	595 x 500 x 1460	86	MP5N8263150	5721
MP5N 8-26	46-65	2	2	DN40 (1 1/2")	595 x 500 x 1460	86	MP5N8265170	5721

Options for Pressosmart MP 5	Article no.	Price
8 litre anti-hammer vessel - work pressure: 8 Bar max.	VASABMP02	161
89 µm core water strainer - automatic cold feed (loose)	OPTMPFILT	159
Impulse meter (water leak detection)	OPTMPDETECT	293
Cold water feed bypass kit	BYPASMP	146
8 Relay board fitted in the control box	OPT8RELAYMP	323
Software and download cable to extract data	OPTCABLE	352
Flooding detector	INONDMP	290
Set of 2 float contacts	OPTMPFLO	310

* Pressure control valve

- For vessels see chapters "Closed expansion vessels" and "Open expansion vessels"

More information of this product on Alfa Laval Anytime, our eBusiness for channel partners:

<https://ebusiness.alfalaval.com/alweb/view/category/3B4185AC-0944-4A4B-BFC8-7FF4093F917B#>



Pressosmart MP 7

Split system type pressurisation set to be piped up to a remote expansion vessel on site. Two types of expansion vessels are proposed:

- Closed expansion vessel
- Open expansion vessel

Pump module main components:

- Two single headed multicellular centrifugal pump 230V 1Ph+N
- One or two pressure control valves: brass or stainless steel body
- Solenoid valve with 230V/50Hz coil
- Piezo electric pressure transducer (if combined with Closed expansion vessels)
- Isolation valves
- Micro 2000 PCS control and monitoring system
- Float contacts for Open expansion vessel are NOT included in pump module, see option "OPTMPFLO" below
- No float contacts are needed for Closed expansion vessels

Complies with European Directives 73/23 CE and PED 97/23 CE - Art. 3.3
Fully assembled, wired, electrically hydraulically tested

Operating limits	Water
Max. operating pressure bar	7
Max. operating temperature °C	95

Pump module	Static height	Pump(s)	PCV(s)*	Hydraulic connection	L x W x H (mm)	Weight (kg)	Article no.	Price
MP7 10-16	10-45	2	1 **	DN50 (2")	595 x 500 x 1460	121	MP71016	6006
MP7 10-16	46-55	2	1 **	DN50 (2")	595 x 500 x 1460	121	MP710164555	6006
MP7 13-16	10-45	2	1 **	DN50 (2")	595 x 500 x 1460	135	MP71316	6559
MP7 13-16	46-55	2	1 **	DN50 (2")	595 x 500 x 1460	135	MP713164565	6559
MP7 15-16	10-45	2	1 **	DN50 (2")	595 x 500 x 1460	137	MP71516	6713
MP7 15-16	46-75	2	1 **	DN50 (2")	595 x 500 x 1460	137	MP715164575	6713
MP7 10-26	10-45	2	2 **	DN50 (2")	595 x 500 x 1460	122	MP71026	6616
MP7 10-26	46-55	2	2 **	DN50 (2")	595 x 500 x 1460	122	MP710264555	6616
MP7 13-26	10-45	2	2 **	DN50 (2")	595 x 500 x 1460	136	MP71326	7168
MP7 13-26	46-55	2	2 **	DN50 (2")	595 x 500 x 1460	136	MP713264565	7168
MP7 15-26	10-45	2	2 **	DN50 (2")	595 x 500 x 1460	138	MP71526	7321
MP7 15-26	46-75	2	2 **	DN50 (2")	595 x 500 x 1460	138	MP715264575	7321
MP7 10-17	10-45	2	1 ***	DN50 (2")	595 x 500 x 1460	122	MP71017	6699
MP7 10-17	46-55	2	1 ***	DN50 (2")	595 x 500 x 1460	122	MP710174555	6699
MP7 13-17	10-45	2	1 ***	DN50 (2")	595 x 500 x 1460	137	MP71317	7253
MP7 13-17	46-55	2	1 ***	DN50 (2")	595 x 500 x 1460	137	MP713174555	7253
MP7 13-17	56-65	2	1 ***	DN50 (2")	595 x 500 x 1460	137	MP713175565	7253
MP7 15-17	10-45	2	1 ***	DN50 (2")	595 x 500 x 1460	138	MP71517	7407
MP7 15-17	46-55	2	1 ***	DN50 (2")	595 x 500 x 1460	138	MP715174555	7407
MP7 15-17	56-75	2	1 ***	DN50 (2")	595 x 500 x 1460	138	MP715175575	7407
MP7 10-27	10-45	2	2 ***	DN50 (2")	595 x 500 x 1460	123	MP71027	8003
MP7 10-27	46-55	2	2 ***	DN50 (2")	595 x 500 x 1460	123	MP710274555	8003
MP7 13-27	10-45	2	2 ***	DN50 (2")	595 x 500 x 1460	137	MP71327	8553
MP7 13-27	46-55	2	2 ***	DN50 (2")	595 x 500 x 1460	137	MP713274555	8553
MP7 13-27	56-65	2	2 ***	DN50 (2")	595 x 500 x 1460	137	MP713275565	8553
MP7 15-27	10-45	2	2 ***	DN50 (2")	595 x 500 x 1460	139	MP71527	8707
MP7 15-27	46-55	2	2 ***	DN50 (2")	595 x 500 x 1460	139	MP715274555	8707
MP7 15-27	56-75	2	2 ***	DN50 (2")	595 x 500 x 1460	139	MP715275575	8707

* Pressure control valve

** Pressure control valve brass body

***Pressure control valve with **stainless steel body**; larger setting scale and better fine-tuning of the settings

Options for Presssmart MP 7	Article no.	Price
8 litre anti-hammer vessel - work pressure: 8 Bar max.	VASABMP03	196
89 µm core water strainer - automatic cold feed (loose)	OPTMPFILT	159
Impulse meter (water leak detection)	OPTMPDETECT	293
Cold water feed bypass kit	BYPASMP	146
8 Relay board fitted in the control box	OPT8RELAYMP	323
Software and download cable to extract data	OPTCABLE	352
Flooding detector	INONDMP	290
Set of 2 float contacts	OPTMPFLO	310

- For vessels see chapters "Closed expansion vessels" and "Open expansion vessels"

More information of this product on Alfa Laval Anytime, our eBusiness for channel partners:
<https://ebusiness.alfalaval.com/alweb/view/category/3B4185AC-0944-4A4B-BFC8-7FF4093F917B#>



Closed expansion vessels

Standard version equipment:

- Outside steel, inside internal rubber bag
- Two configurations: with or without control equipment
- 1 bar safety valve
- Float contacts are not needed for Closed Expansion Vessels

Key benefits

- + Water loop is not in contact with air
- + Upgrading from Open to Closed vessels is very easy; no need to change the pump module
- + Good and safe performance with pump module settings below 3 bar *
- + Possibility to have several vessels in serie (only one vessel needs the control equipment)

Operating limits	Water
Max. operating pressure bar	1
Max. operating temperature °C	80

Volume (L)	Control equipment	To be connected to	Diameter	Height (mm) *	Weight (kg)	Article no.	Price
500	with	MP4 / MP5	775	1642	90	VASMP0500E5	4852
500	with	MP7	775	1642	90	VASMP0500E7	4852
500	without	MP4 / MP5 / MP7	775	1642	90	VASMP0500	1722
1000	with	MP4 / MP5	800	2465	150	VASMP1000E5	6350
1000	with	MP7	800	2465	150	VASMP1000E7	6350
1000	without	MP4 / MP5 / MP7	800	2465	150	VASMP1000	3221

* Feet and purge included

More information of this product on Alfa Laval Anytime, our eBusiness for channel partners:

<https://ebusiness.alfalaval.com/alweb/view/category/8E2959FD-38E3-4E69-8B94-A707582E16AC#>


Open expansion vessels

- PPH material (polypropylene)
- Excellent corrosion resistance
- Removable top cover for internal inspection
- Strengthened connections (steel rings)
- Specially designed to be piped up to all pump modules
- Capacities from 200 to 5000 litres
- Equipped with 2 float contacts if vessel is combined with a pump module (article number ending with "...PPHX")
- No float contacts are provided for loose vessels (article number ending with "...PPHY")

Key benefits

- + Good value for money
- + Excellent corrosion resistance
- + Possibility to have several vessels in serie
- + Large choice of volumes

Operating limits	Water
Max. operating pressure bar	atmosphere
Max. operating temperature °C	80

Open vessels combined with a Pump Module / 2 float contacts included / To be connected to MP4 / MP5 / MP7					
Volume (L)	Diameter (mm)	Height (mm)	Weight (kg)	Article no.	Price
200	400	1505	14	BAC0200PPHX	1369
400	600	1505	19	BAC0400PPHX	1382
600	700	1505	23	BAC0600PPHX	1516
800	850	1506	33	BAC0800PPHX	1608
1000	950	1506	38	BAC1000PPHX	1721
1800	1250	1506	57	BAC1800PPHX	2384
2500	1250	2006	85	BAC2500PPHX	2765
3000	1430	2008	104	BAC3000PPHX	3097
3500	1430	2258	113	BAC3500PPHX	3371
4000	1430	2508	122	BAC4000PPHX	3512
5000	1430	3008	167	BAC5000PPHX	3812

Open vessels loose / float contacts are NOT included / To be connected to MP4 / MP5 / MP7					
Volume (L)	Diameter (mm)	Height (mm)	Weight (kg)	Article no.	Price
200	400	1505	14	BAC0200PPHY	1150
400	600	1505	19	BAC0400PPHY	1164
600	700	1505	23	BAC0600PPHY	1297
800	850	1506	33	BAC0800PPHY	1389
1000	950	1506	38	BAC1000PPHY	1503
1800	1250	1506	57	BAC1800PPHY	2165
2500	1250	2006	85	BAC2500PPHY	2547
3000	1430	2008	104	BAC3000PPHY	2879
3500	1430	2258	113	BAC3500PPHY	3151
4000	1430	2508	122	BAC4000PPHY	3294
5000	1430	3008	167	BAC5000PPHY	3593

More information of this product on Alfa Laval Anytime, our eBusiness for channel partners:
<https://ebusiness.alfalaval.com/alweb/view/category/4FE677BE-0964-4EA1-82A7-72F8600C8102#>

Magnetic filter

Magnetic filter



KAB

Magnetic settling pots enable to remove ferrous corrosion particles contained into water pipeworks on the primary side. They consist of a set of magnet bars immersed in water that will trap ferrous particles. Heavier non ferrous particles will decant within the KAB body due to the velocity reduction.

Key benefits

- + Keeps the primary circuit clean
- + Improves the heat transfer in the tap water system
- + Extremely easy to install and to maintain
- + Option strainer basket (for non-ferrous particles): most reliable and efficient strainer on the market

Operating limits	Water
Max. operating pressure bar	10
Max. operating temperature °C *	110

Model	Nominal capacities (kW)	Instal. volume (m ³)	Installation	KAB	Captation power (kg)	Hydraulic connection DN	Net weight (kg)	Article no.	Price
			Water flow rates (m ³ /h)						
KAB 03	350	5	15	3	0.6	1"	50	KAB0300	1289
KAB 07	820	10	35	7	1.2	65	90	KAB0700	2554
KAB 15	1750	25	75	15	2.4	65	105	KAB1500	2959
KAB 25	3000	40	125	25	4.2	65	120	KAB2500	3353

Options for KAB	Model	Article no.	Price
50 m mesh removable strainer basket	KAB 07 15	KABFIL15	1319
50 m mesh removable strainer basket	KAB 25	KABFIL25	1333
Feed circulator shipped loose **	KAB 03 - 230/1/50 - 90 W - 0.40 A	KABPOM03	199
Feed circulator shipped loose **	KAB 07 - 230/1/50 - 245 W - 1.05 A	KABPOM07	894
Feed circulator shipped loose **	KAB 15 - 230/1/50 - 380 W - 1.75 A	KABPOM15	1015
Feed circulator shipped loose **	KAB 25 - 400/3/50 - 720 W - 1.30 A	KABPOM25	1375
Inlet outlet manual isolation valves shipped loose	KAB 03 - DN 25	KABROB03	70
Inlet outlet manual isolation valves shipped loose	KAB 07 KAB 15 KAB 25 - DN 65	KABROB25	233
Option pump + valves ** / Price only valid up till June 2015	KAB 03 - DN 25	KABPOMVAN03	200
Option pump + valves ** / Price only valid up till June 2015	KAB 07 - DN 65	KABPOMVAN07	1044
Option pump + valves ** / Price only valid up till June 2015	KAB 15 - DN 65	KABPOMVAN15	1177
Option pump + valves ** / Price only valid up till June 2015	KAB 25 - DN 65	KABPOMVAN25	1444

* In accordance with each country's legislation

** Matching flanges, gaskets and bolts not provided

Standard specifications

- External rust protection paint
- PN 10/16 ISO flanges
- Automatic purge cock, manual drain valve
- Magnetic cylindrical barrels
- Matting flanges, gaskets and bolts not provided
- Compliance with the European Directives 73/23 CE

More information of this product on Alfa Laval Anytime, our eBusiness for channel partners:

<https://ebusiness.alfalaval.com/alweb/view/category/A07FC10C-BC17-4701-BB0B-998CD64E4164#>

Spare parts

Spare parts for Heating & Cooling Systems can be selected in a few clicks in the Parts Finder on Alfa Laval Anytime, our Ebusiness for channel partners:

Quick guide Alfa Laval Parts Finder “Click & Find”:

1. **Product Category** : Select the type of system
2. **Product name** : Select the name of the product
3. **Sparepart** :Select the requested spare part
4. **Model** : Select the product model (mentioned on firmplate)
5. **Year** : If necessary select the year (mentioned on firmplate). If not “N/A” (Non Applicable) will appear on the screen
6. **Country** : If necessary select the country. If not “N/A” (Non Applicable) will appear on screen
7. **Pump type** : For pumps only: select the type of pump
8. The article number for the requested spare part will appear in “Item to order”

9. To order on-line: copy and paste the “Item to order” into “Quick order” in Alfa Laval Anytime:

The Parts Finder can be downloaded from Alfa Laval Anytime:

Select a product in "HVAC solutions" and click on the "Documentation" tab as below:

<https://ebusiness.alfalaval.com/alweb/view/category/12D1A99B-0041-44A9-BE96-3C87CA0223D2#>

The screenshot shows the Alfa Laval Anytime website interface. On the left, there is a navigation menu with the following items: HVAC solutions (expanded), Cooling systems, Heating Systems Large, Heating Systems Medium, Heating Systems Small, Magnetic filters, Multi-energy pilot, Pool heaters, Pressurisation sets, Storage tanks, Tap water systems (expanded), AquaCompact, and AquaEfficiency. On the right, there are three tabs: Product Items, Documentation (selected), and Services. Below the tabs is a list of documentation items: Drawings & Models (36), Electrical information (3), Instructions & Manuals (1), Ordering & Pricing (3), Product Data & Performance (2), Sales & Marketing (3), Spare Parts & Accessories (1) (expanded), Spare Parts List (1), and Parts Finder 2014.3 (608 KB). Red circles highlight the 'HVAC solutions' and 'Tap water systems' categories in the left menu, the 'Documentation' tab, the 'Spare Parts & Accessories (1)' item, and the 'Parts Finder 2014.3 (608 KB)' download link.



Alfa Laval in brief

Alfa Laval is a leading global provider of specialized products and engineered solutions.

Our equipment, systems and services are dedicated to helping customers optimize the performance of their processes. Time and time again.

We help our customers to heat, cool, separate and transport products such as oil, water, chemicals, beverages, foodstuffs, starch and pharmaceuticals.

Our worldwide organization works closely with customers in almost 100 countries to help them stay ahead.

How to contact Alfa Laval

Scan to learn more about Alfa Laval refrigeration solutions and find a distributor near you. Or you can always get up-to-date Alfa Laval contact details for all countries at www.alfalaval.com/contact-us

**Alfa Laval
Industrial Equipment Segment
Market Unit Comfort/HVAC**



www.alfalaval.com/hvac

